

Prosperity Centre
Palm Beach Gardens, Florida

1 Mile Radius

3 Mile Radius

5 Mile Radius

10 Minute Drive

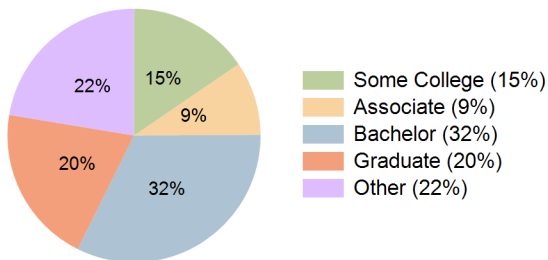
Current Year Demographics

Current Population	9,686	66,073	152,887	67,369
Total Daytime Pop	17,178	85,330	180,824	90,079
Daytime Workers	12,806	52,633	103,489	56,281
Average Household Income	\$139,242	\$147,653	\$147,693	\$146,489
Median Household Income	\$92,956	\$99,511	\$95,910	\$98,267
Total Households	4,682	30,413	67,784	30,818
Median Home Value	\$534,181	\$581,734	\$584,906	\$587,726
Bachelors Degree	33.4%	32.5%	30.4%	32.4%
Graduate Degree	17.5%	20.2%	20.4%	20.3%
Consumer Spending Index	122	129	130	128

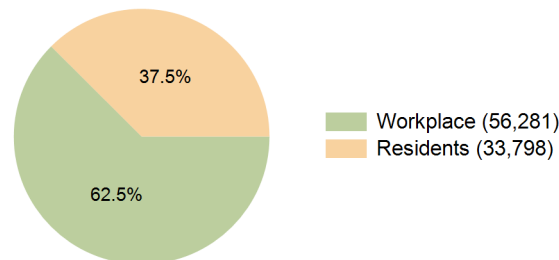
2029 Demographic Projections

Projected Population	10,023	67,879	156,292	69,197
Projected 5 Year Annual Growth Rate (Pop)	0.7%	0.5%	0.4%	0.5%
Projected Households	4,888	31,457	69,826	31,872
Projected 5 Year Annual Growth Rate (HH)	0.9%	0.7%	0.6%	0.7%

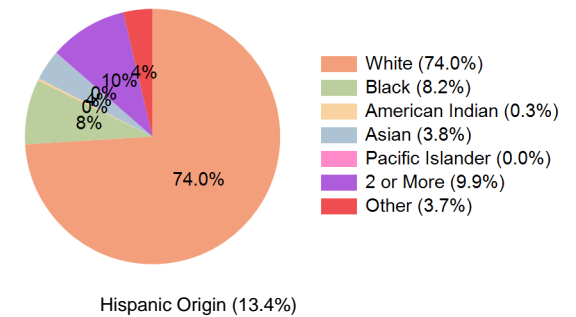
Education (10 Minute Drive)



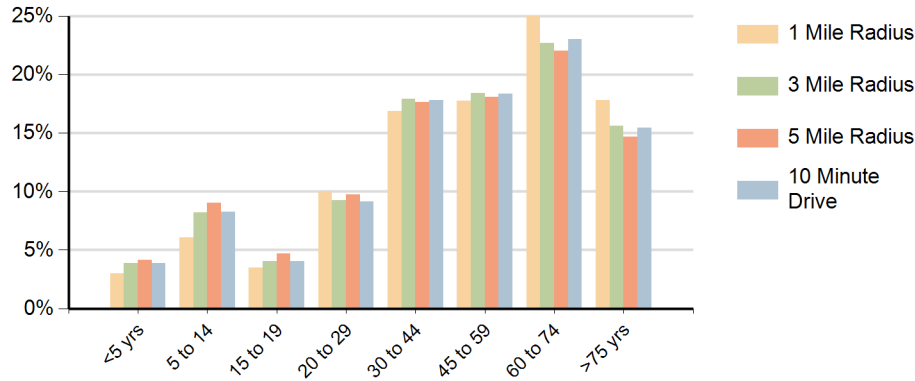
Daytime Population (10 Minute Drive)



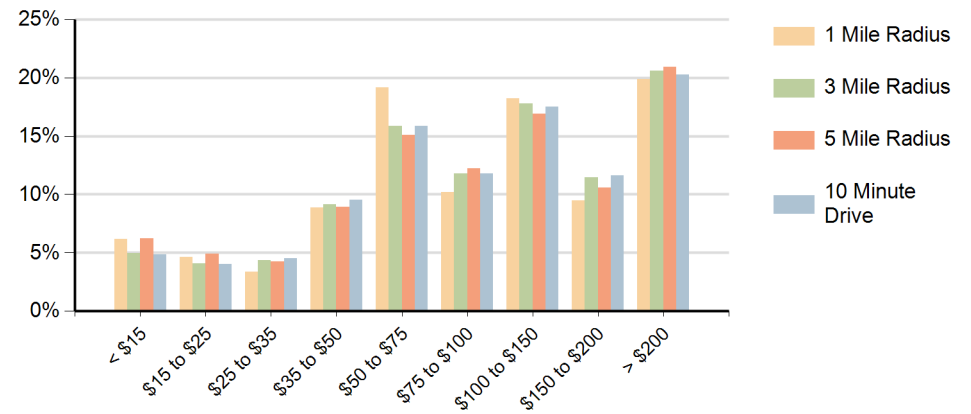
Race (10 Minute Drive)



Population by Age Range



Households by Income Range (\$000)



Prosperity Centre Palm Beach Gardens, Florida		1 Mile Radius	3 Mile Radius	5 Mile Radius	10 Minute Drive
Population	Current Estimated Population	9,686	66,073	152,887	67,369
	2020 Census Population	9,220	64,629	146,892	66,008
	2010 Census Population	8,069	56,734	127,658	58,180
	Historical Annual Growth 2010 to 2020	1.3%	1.3%	1.4%	1.3%
	Estimated Annual Growth 2020 to 2024	1.2%	0.5%	1.0%	0.5%
	Projected Annual Growth 2024 to 2029	0.7%	0.5%	0.4%	0.5%
Households	Current Estimated Households	4,682	30,413	67,784	30,818
	2020 Census Households	4,446	29,482	64,743	29,863
	2010 Census Households	4,135	26,571	57,618	27,041
	Historical Annual Growth 2010 to 2020	0.7%	1.1%	1.2%	1.0%
	Estimated Annual Growth 2020 to 2024	1.2%	0.7%	1.1%	0.7%
	Projected Annual Growth 2024 to 2029	0.9%	0.7%	0.6%	0.7%
Population per Household		2.0	2.1	2.2	2.2
Race	White	78.0%	75.0%	64.6%	74.0%
	Black or African American	3.2%	7.3%	18.4%	8.2%
	American Indian	0.5%	0.3%	0.3%	0.3%
	Asian	2.9%	3.9%	3.8%	3.8%
	Pacific Islander	0.0%	0.0%	0.0%	0.0%
	2 or More Races	10.0%	9.9%	9.4%	9.9%
	Other Races	5.5%	3.7%	3.6%	3.7%
	Hispanic Origin	16.1%	13.4%	12.9%	13.4%