

Ralphs Circle Center
Long Beach, California

1 Mile Radius

3 Mile Radius

5 Mile Radius

10 Minute Drive

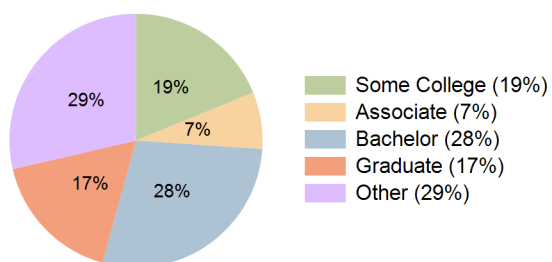
Current Year Demographics

Current Population	30,661	242,436	513,892	192,341
Total Daytime Pop	29,331	232,000	508,601	196,787
Daytime Workers	15,516	118,208	257,582	105,093
Average Household Income	\$121,829	\$123,194	\$124,289	\$133,287
Median Household Income	\$92,294	\$89,259	\$91,666	\$100,093
Total Households	12,579	99,697	201,785	75,531
Median Home Value	\$863,324	\$917,257	\$866,096	\$914,266
Bachelors Degree	31.7%	27.9%	26.5%	28.2%
Graduate Degree	16.0%	16.2%	14.9%	17.1%
Consumer Spending Index	104	105	106	113

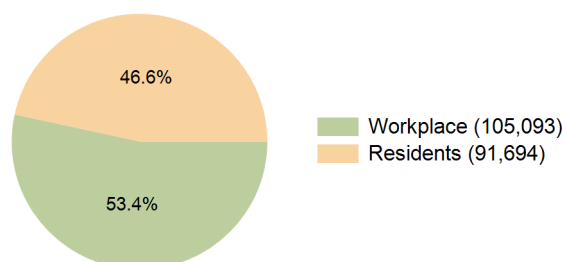
2030 Demographic Projections

Projected Population	29,943	236,518	504,682	187,423
Projected 5 Year Annual Growth Rate (Pop)	-0.5%	-0.5%	-0.4%	-0.5%
Projected Households	12,514	99,497	202,971	75,157
Projected 5 Year Annual Growth Rate (HH)	-0.1%	0.0%	0.1%	-0.1%

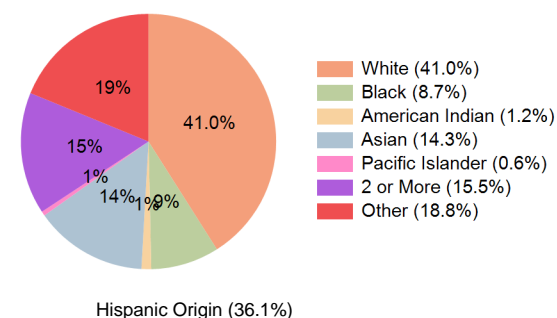
Education (10 Minute Drive)



Daytime Population (10 Minute Drive)

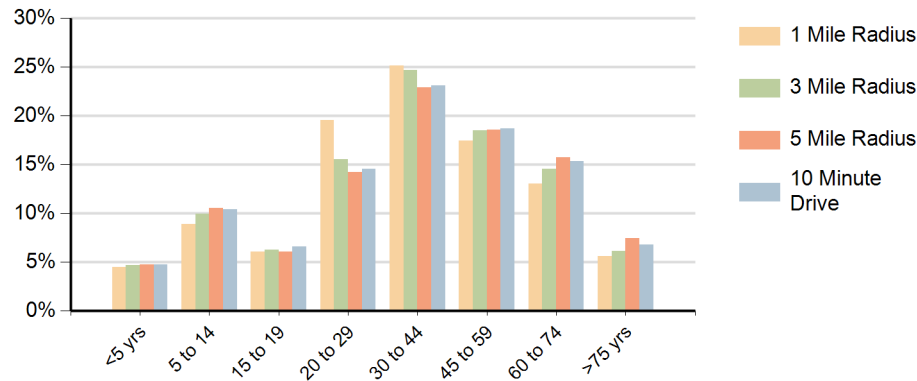


Race (10 Minute Drive)

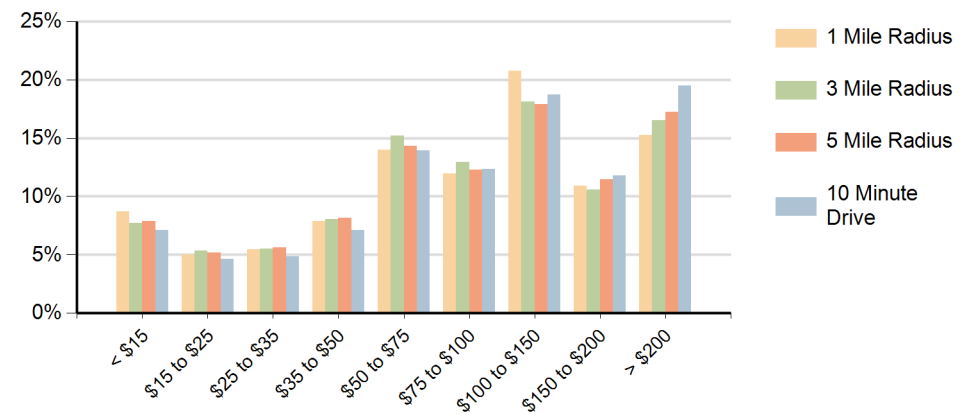


Hispanic Origin (36.1%)

Population by Age Range



Households by Income Range (\$000)



Ralphs Circle Center Long Beach, California		1 Mile Radius	3 Mile Radius	5 Mile Radius	10 Minute Drive
Population	Current Estimated Population	30,661	242,436	513,892	192,341
	2020 Census Population	32,047	252,994	531,914	201,475
	2010 Census Population	30,573	252,483	522,798	199,576
	Historical Annual Growth 2010 to 2020	0.5%	0.0%	0.2%	0.1%
	Estimated Annual Growth 2020 to 2025	-0.8%	-0.8%	-0.7%	-0.9%
	Projected Annual Growth 2025 to 2030	-0.5%	-0.5%	-0.4%	-0.5%
Households	Current Estimated Households	12,579	99,697	201,785	75,531
	2020 Census Households	12,695	100,158	200,886	76,249
	2010 Census Households	12,481	97,323	193,322	74,654
	Historical Annual Growth 2010 to 2020	0.2%	0.3%	0.4%	0.2%
	Estimated Annual Growth 2020 to 2025	-0.2%	-0.1%	0.1%	-0.2%
	Projected Annual Growth 2025 to 2030	-0.1%	0.0%	0.1%	-0.1%
Race	Population per Household	2.3	2.4	2.5	2.5
	White	39.5%	39.0%	36.0%	41.0%
	Black or African American	11.2%	9.5%	10.3%	8.7%
	American Indian	1.5%	1.4%	1.3%	1.2%
	Asian	14.8%	12.8%	14.9%	14.3%
	Pacific Islander	0.6%	0.6%	0.8%	0.6%
	2 or More Races	15.6%	14.9%	15.2%	15.5%
	Other Races	16.9%	21.9%	21.6%	18.8%
Hispanic Origin		34.5%	39.1%	39.2%	36.1%