

Shoppes of Sunset II Miami, Florida

1 Mile Radius

3 Mile Radius

5 Mile Radius

10 Minute Drive

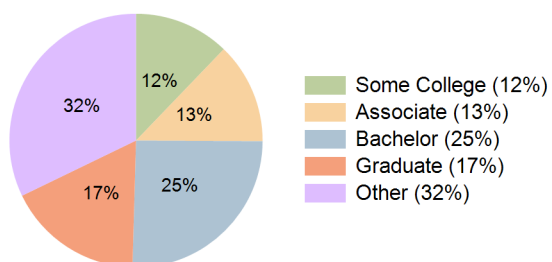
Current Year Demographics

| | | | | |
|--------------------------|-----------|-----------|-----------|-----------|
| Current Population | 17,569 | 143,850 | 448,803 | 126,032 |
| Total Daytime Pop | 18,875 | 157,849 | 455,444 | 144,291 |
| Daytime Workers | 11,306 | 90,951 | 239,557 | 86,299 |
| Average Household Income | \$142,102 | \$134,199 | \$131,804 | \$134,726 |
| Median Household Income | \$104,793 | \$93,087 | \$89,472 | \$93,999 |
| Total Households | 6,737 | 54,851 | 163,004 | 47,959 |
| Median Home Value | \$512,340 | \$565,171 | \$561,069 | \$563,337 |
| Bachelors Degree | 27.8% | 25.2% | 25.0% | 25.4% |
| Graduate Degree | 19.4% | 17.7% | 16.4% | 17.4% |
| Consumer Spending Index | 121 | 114 | 112 | 115 |

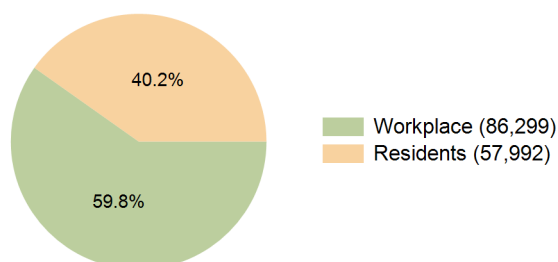
2030 Demographic Projections

| | | | | |
|---|--------|---------|---------|---------|
| Projected Population | 17,031 | 140,492 | 443,545 | 122,884 |
| Projected 5 Year Annual Growth Rate (Pop) | -0.6% | -0.5% | -0.2% | -0.5% |
| Projected Households | 6,609 | 54,262 | 163,237 | 47,410 |
| Projected 5 Year Annual Growth Rate (HH) | -0.4% | -0.2% | 0.0% | -0.2% |

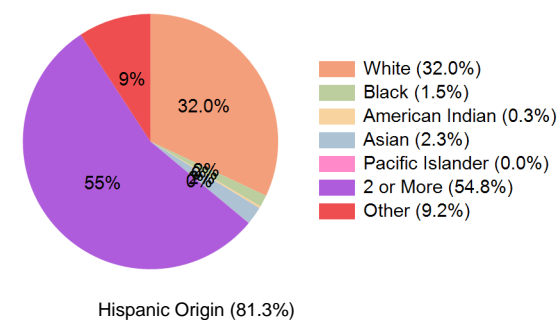
Education (10 Minute Drive)



Daytime Population (10 Minute Drive)

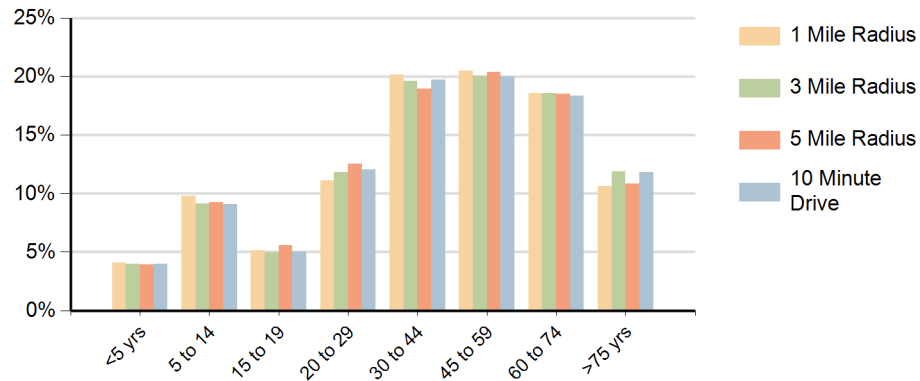


Race (10 Minute Drive)

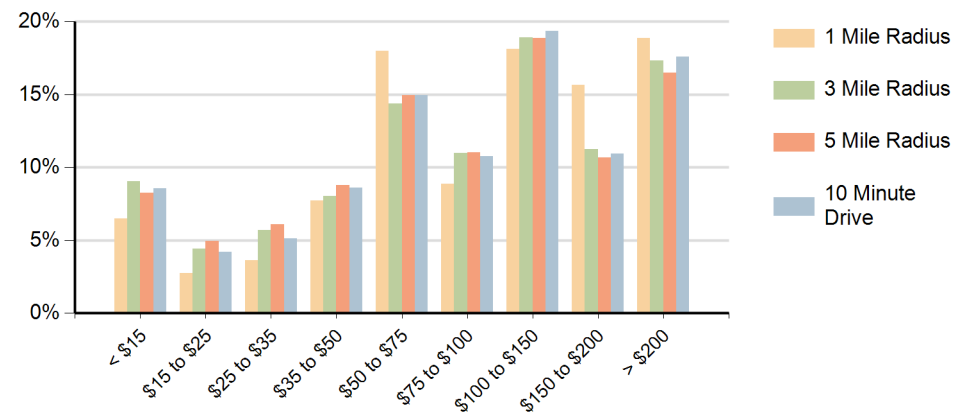


Hispanic Origin (81.3%)

Population by Age Range



Households by Income Range (\$000)



| Shoppes of Sunset II Miami, Florida | | 1 Mile Radius | 3 Mile Radius | 5 Mile Radius | 10 Minute Drive |
|--|---------------------------------------|---------------|---------------|---------------|-----------------|
| Population | Current Estimated Population | 17,569 | 143,850 | 448,803 | 126,032 |
| | 2020 Census Population | 18,290 | 148,764 | 460,302 | 129,909 |
| | 2010 Census Population | 18,638 | 143,731 | 451,060 | 124,598 |
| | Historical Annual Growth 2010 to 2020 | -0.2% | 0.3% | 0.2% | 0.4% |
| | Estimated Annual Growth 2020 to 2025 | -0.8% | -0.6% | -0.5% | -0.6% |
| | Projected Annual Growth 2025 to 2030 | -0.6% | -0.5% | -0.2% | -0.5% |
| Households | Current Estimated Households | 6,737 | 54,851 | 163,004 | 47,959 |
| | 2020 Census Households | 6,849 | 55,342 | 162,866 | 48,184 |
| | 2010 Census Households | 6,733 | 51,332 | 154,249 | 44,101 |
| | Historical Annual Growth 2010 to 2020 | 0.2% | 0.8% | 0.6% | 0.9% |
| | Estimated Annual Growth 2020 to 2025 | -0.3% | -0.2% | 0.0% | -0.1% |
| | Projected Annual Growth 2025 to 2030 | -0.4% | -0.2% | 0.0% | -0.2% |
| Race | Population per Household | 2.6 | 2.6 | 2.7 | 2.6 |
| | White | 32.5% | 31.9% | 31.3% | 32.0% |
| | Black or African American | 1.3% | 1.5% | 2.9% | 1.5% |
| | American Indian | 0.2% | 0.3% | 0.2% | 0.3% |
| | Asian | 2.2% | 2.0% | 2.2% | 2.3% |
| | Pacific Islander | 0.1% | 0.0% | 0.0% | 0.0% |
| | 2 or More Races | 53.6% | 54.9% | 53.4% | 54.8% |
| | Other Races | 10.2% | 9.3% | 9.9% | 9.2% |
| Hispanic Origin | | 80.8% | 81.5% | 80.4% | 81.3% |