

South Beach Regional
Jacksonville Beach, Florida

1 Mile Radius

3 Mile Radius

5 Mile Radius

10 Minute Drive

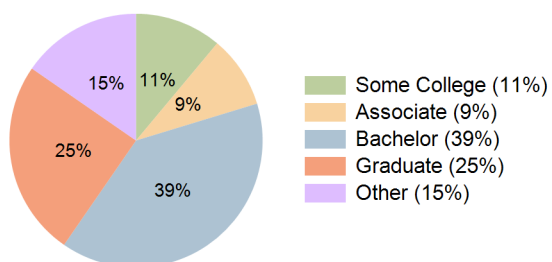
Current Year Demographics

Current Population	9,445	35,795	85,085	23,955
Total Daytime Pop	10,956	41,091	107,293	31,621
Daytime Workers	6,945	24,404	67,103	20,817
Average Household Income	\$178,843	\$179,684	\$162,470	\$168,201
Median Household Income	\$108,157	\$118,920	\$111,370	\$111,204
Total Households	4,682	16,628	38,861	11,831
Median Home Value	\$578,933	\$610,680	\$567,328	\$590,634
Bachelors Degree	39.4%	39.8%	38.6%	39.3%
Graduate Degree	26.9%	23.8%	22.4%	25.0%
Consumer Spending Index	153	153	139	144

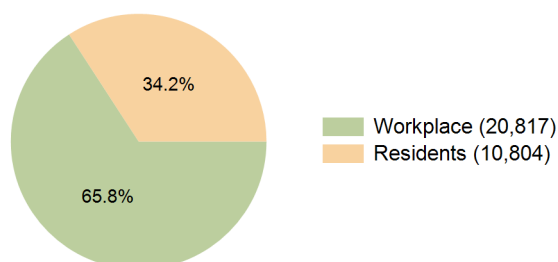
2030 Demographic Projections

Projected Population	9,310	37,473	88,342	24,620
Projected 5 Year Annual Growth Rate (Pop)	-0.3%	0.9%	0.8%	0.6%
Projected Households	4,637	17,427	40,461	12,140
Projected 5 Year Annual Growth Rate (HH)	-0.2%	0.9%	0.8%	0.5%

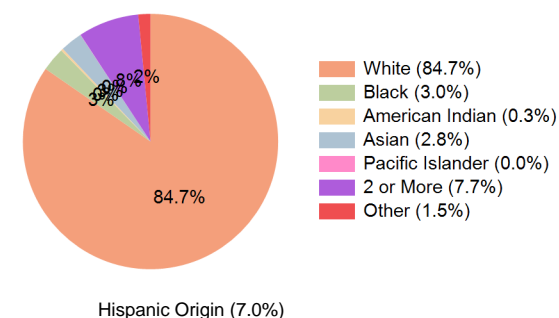
Education (10 Minute Drive)



Daytime Population (10 Minute Drive)

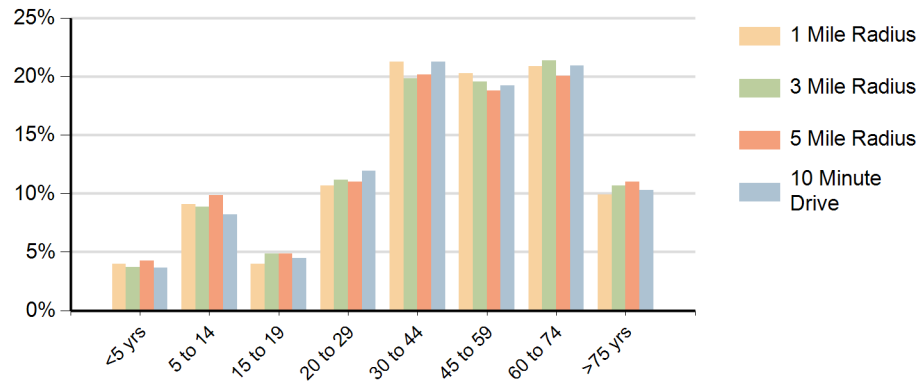


Race (10 Minute Drive)

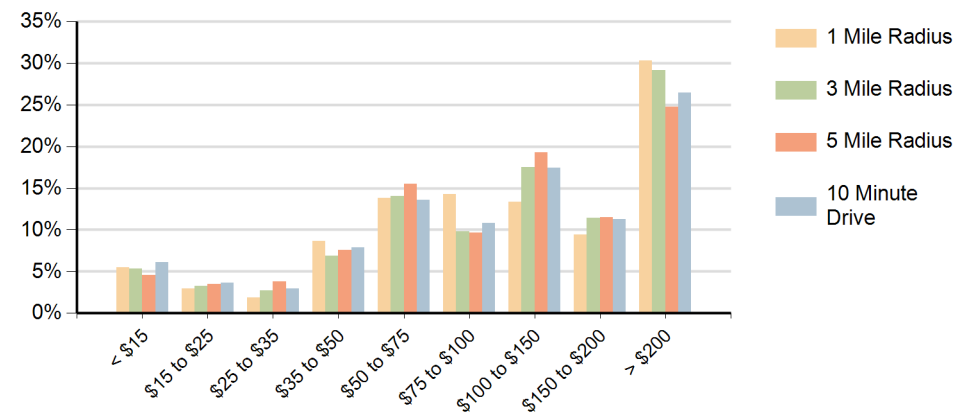


Hispanic Origin (7.0%)

Population by Age Range



Households by Income Range (\$000)



South Beach Regional Jacksonville Beach, Florida		1 Mile Radius	3 Mile Radius	5 Mile Radius	10 Minute Drive
Population	Current Estimated Population	9,445	35,795	85,085	23,955
	2020 Census Population	9,642	35,903	84,003	24,171
	2010 Census Population	8,410	32,059	74,741	21,523
	Historical Annual Growth 2010 to 2020	1.4%	1.1%	1.2%	1.2%
	Estimated Annual Growth 2020 to 2025	-0.4%	-0.1%	0.2%	-0.2%
	Projected Annual Growth 2025 to 2030	-0.3%	0.9%	0.8%	0.6%
Households	Current Estimated Households	4,682	16,628	38,861	11,831
	2020 Census Households	4,714	16,501	37,870	11,788
	2010 Census Households	4,125	14,732	33,843	10,464
	Historical Annual Growth 2010 to 2020	1.3%	1.1%	1.1%	1.2%
	Estimated Annual Growth 2020 to 2025	-0.1%	0.2%	0.5%	0.1%
	Projected Annual Growth 2025 to 2030	-0.2%	0.9%	0.8%	0.5%
Race	Population per Household	2.0	2.1	2.2	2.0
	White	86.1%	85.2%	80.5%	84.7%
	Black or African American	1.7%	2.7%	3.6%	3.0%
	American Indian	0.2%	0.3%	0.3%	0.3%
	Asian	2.7%	2.7%	3.5%	2.8%
	Pacific Islander	0.0%	0.0%	0.1%	0.0%
	2 or More Races	7.8%	7.7%	9.0%	7.7%
	Other Races	1.4%	1.5%	3.0%	1.5%
Hispanic Origin		7.1%	6.7%	9.5%	7.0%