

Star's at Cambridge
Cambridge, Massachusetts

1 Mile Radius

3 Mile Radius

5 Mile Radius

10 Minute Drive

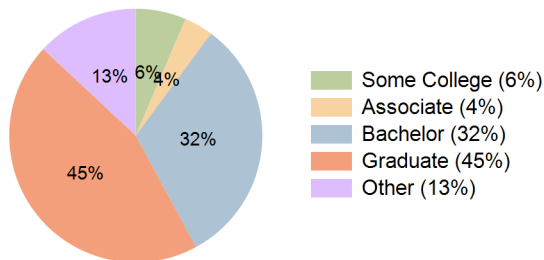
Current Year Demographics

Current Population	20,498	394,794	864,073	143,917
Total Daytime Pop	22,682	374,405	1,154,153	154,043
Daytime Workers	13,863	223,173	802,795	93,814
Average Household Income	\$199,062	\$171,837	\$170,930	\$179,902
Median Household Income	\$143,469	\$116,687	\$114,407	\$124,370
Total Households	8,988	164,644	363,838	60,100
Median Home Value	\$1,064,644	\$978,386	\$961,549	\$980,009
Bachelors Degree	28.0%	34.1%	31.9%	32.0%
Graduate Degree	47.4%	42.0%	39.5%	44.8%
Consumer Spending Index	171	149	149	156

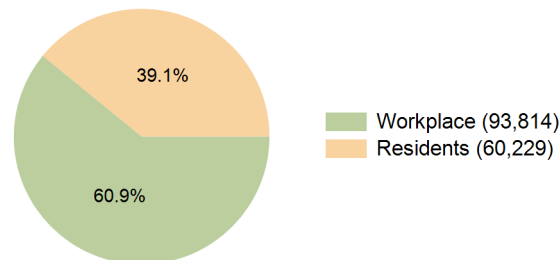
2029 Demographic Projections

Projected Population	20,304	400,874	881,867	146,732
Projected 5 Year Annual Growth Rate (Pop)	-0.2%	0.3%	0.4%	0.4%
Projected Households	8,913	168,538	376,169	61,743
Projected 5 Year Annual Growth Rate (HH)	-0.2%	0.5%	0.7%	0.5%

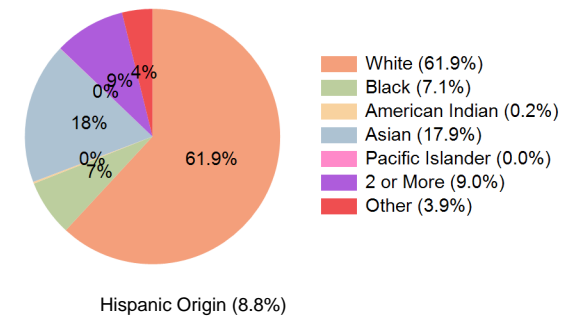
Education (10 Minute Drive)



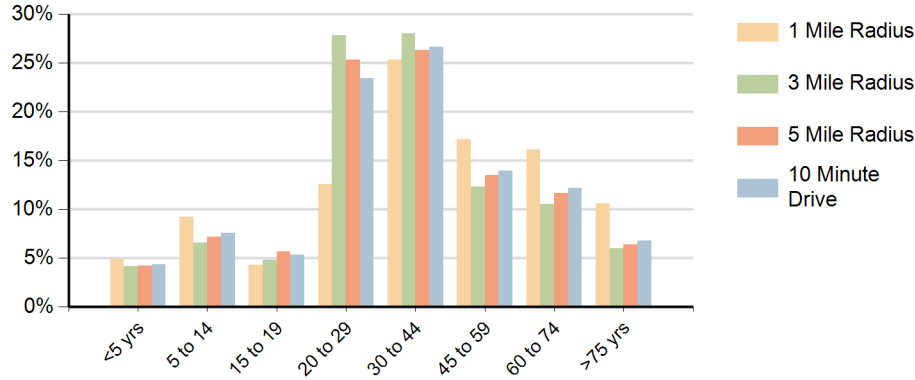
Daytime Population (10 Minute Drive)



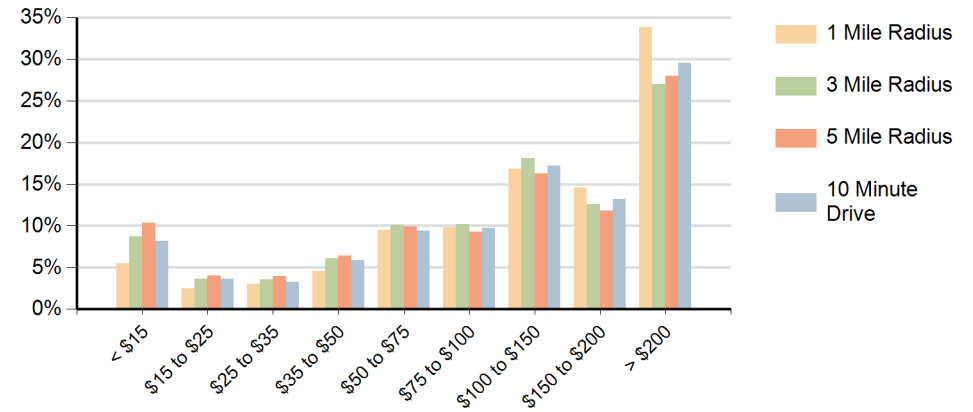
Race (10 Minute Drive)



Population by Age Range



Households by Income Range (\$000)



Star's at Cambridge Cambridge, Massachusetts		1 Mile Radius	3 Mile Radius	5 Mile Radius	10 Minute Drive
Population	Current Estimated Population	20,498	394,794	864,073	143,917
	2020 Census Population	20,576	392,422	862,914	142,528
	2010 Census Population	19,345	367,257	788,362	131,510
	Historical Annual Growth 2010 to 2020	0.6%	0.7%	0.9%	0.8%
	Estimated Annual Growth 2020 to 2024	-0.1%	0.1%	0.0%	0.2%
	Projected Annual Growth 2024 to 2029	-0.2%	0.3%	0.4%	0.4%
Households	Current Estimated Households	8,988	164,644	363,838	60,100
	2020 Census Households	9,054	162,877	360,608	59,192
	2010 Census Households	8,831	153,662	332,565	54,497
	Historical Annual Growth 2010 to 2020	0.3%	0.6%	0.8%	0.8%
	Estimated Annual Growth 2020 to 2024	-0.2%	0.3%	0.2%	0.4%
	Projected Annual Growth 2024 to 2029	-0.2%	0.5%	0.7%	0.5%
Population per Household		2.3	2.2	2.2	2.2
Race	White	70.4%	63.4%	60.8%	61.9%
	Black or African American	5.5%	6.3%	7.7%	7.1%
	American Indian	0.2%	0.2%	0.3%	0.2%
	Asian	11.0%	17.3%	16.9%	17.9%
	Pacific Islander	0.0%	0.1%	0.0%	0.0%
	2 or More Races	9.7%	8.9%	8.9%	9.0%
	Other Races	3.2%	3.9%	5.4%	3.9%
	Hispanic Origin	7.8%	8.9%	11.0%	8.8%