

Plaza at St. Lucie West  
Port St. Lucie, Florida

1 Mile Radius

3 Mile Radius

5 Mile Radius

10 Minute Drive

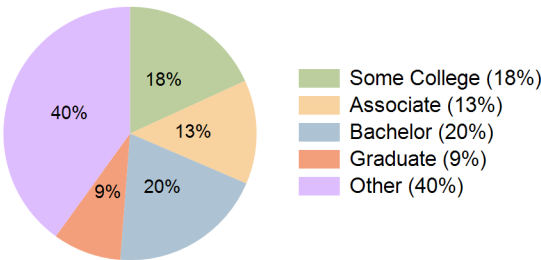
Current Year Demographics

Current Population	8,455	79,988	168,165	82,317
Total Daytime Pop	11,202	71,212	148,729	72,517
Daytime Workers	5,663	25,198	52,232	25,694
Average Household Income	\$98,969	\$98,280	\$95,328	\$96,166
Median Household Income	\$73,659	\$78,764	\$77,720	\$78,356
Total Households	4,126	30,329	63,733	30,587
Median Home Value	\$350,702	\$367,797	\$371,224	\$364,095
Bachelors Degree	20.0%	20.1%	19.7%	19.8%
Graduate Degree	12.7%	9.5%	9.0%	8.7%
Consumer Spending Index	89	87	84	85

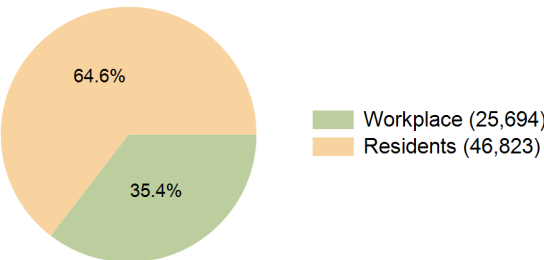
2029 Demographic Projections

Projected Population	8,785	87,432	186,546	89,984
Projected 5 Year Annual Growth Rate (Pop)	0.8%	1.8%	2.1%	1.8%
Projected Households	4,257	32,840	70,203	33,120
Projected 5 Year Annual Growth Rate (HH)	0.6%	1.6%	2.0%	1.6%

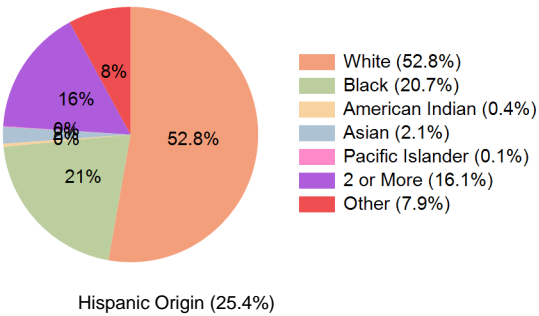
Education (10 Minute Drive)



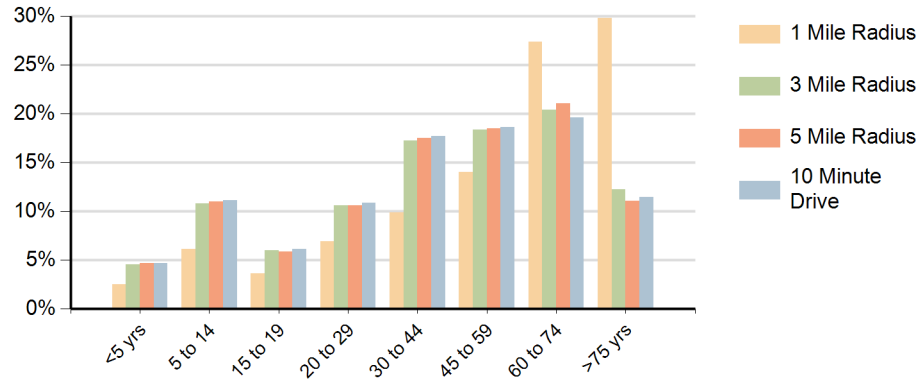
Daytime Population (10 Minute Drive)



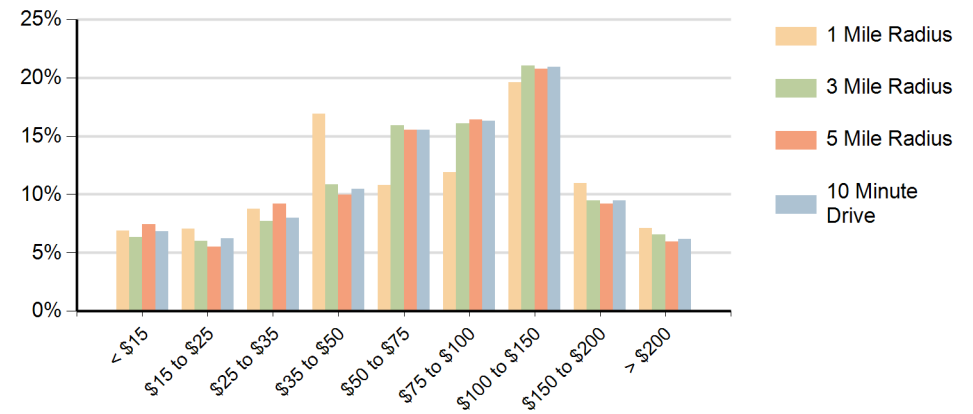
Race (10 Minute Drive)



### Population by Age Range



### Households by Income Range (\$000)



Plaza at St. Lucie West Port St. Lucie, Florida		1 Mile Radius	3 Mile Radius	5 Mile Radius	10 Minute Drive
Population	Current Estimated Population	8,455	79,988	168,165	82,317
	2020 Census Population	8,143	72,459	150,780	74,798
	2010 Census Population	7,444	61,043	123,144	63,263
	Historical Annual Growth 2010 to 2020	0.9%	1.7%	2.1%	1.7%
	Estimated Annual Growth 2020 to 2024	0.9%	2.4%	2.6%	2.3%
	Projected Annual Growth 2024 to 2029	0.8%	1.8%	2.1%	1.8%
Households	Current Estimated Households	4,126	30,329	63,733	30,587
	2020 Census Households	4,028	27,804	57,715	28,163
	2010 Census Households	3,637	23,527	46,991	23,987
	Historical Annual Growth 2010 to 2020	1.0%	1.7%	2.1%	1.6%
	Estimated Annual Growth 2020 to 2024	0.6%	2.1%	2.4%	2.0%
	Projected Annual Growth 2024 to 2029	0.6%	1.6%	2.0%	1.6%
Race	Population per Household	2.0	2.6	2.6	2.7
	White	69.6%	53.6%	55.3%	52.8%
	Black or African American	10.4%	20.2%	19.3%	20.7%
	American Indian	0.1%	0.4%	0.4%	0.4%
	Asian	2.1%	2.3%	2.2%	2.1%
	Pacific Islander	0.1%	0.1%	0.1%	0.1%
	2 or More Races	12.3%	15.8%	15.3%	16.1%
	Other Races	5.4%	7.7%	7.4%	7.9%
Hispanic Origin		19.0%	24.9%	23.9%	25.4%