

Unigold Shopping Center
Winter Park, Florida

1 Mile Radius

3 Mile Radius

5 Mile Radius

10 Minute Drive

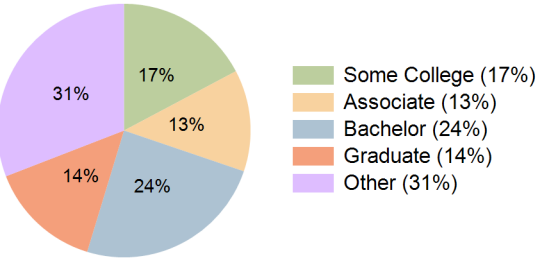
Current Year Demographics

Current Population	14,597	108,171	283,766	116,930
Total Daytime Pop	12,236	94,158	285,715	104,232
Daytime Workers	6,649	45,953	154,363	52,942
Average Household Income	\$87,657	\$104,616	\$114,427	\$97,276
Median Household Income	\$67,023	\$76,073	\$81,069	\$72,894
Total Households	6,240	43,842	109,931	46,786
Median Home Value	\$430,331	\$430,640	\$447,926	\$408,900
Bachelors Degree	21.5%	26.0%	27.8%	24.5%
Graduate Degree	19.1%	16.2%	17.1%	14.4%
Consumer Spending Index	78	91	99	85

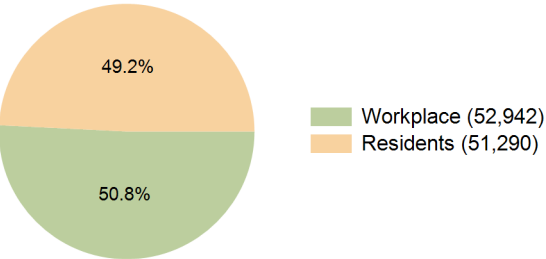
2030 Demographic Projections

Projected Population	15,110	111,989	290,650	121,438
Projected 5 Year Annual Growth Rate (Pop)	0.7%	0.7%	0.5%	0.8%
Projected Households	6,470	45,566	113,213	48,720
Projected 5 Year Annual Growth Rate (HH)	0.7%	0.8%	0.6%	0.8%

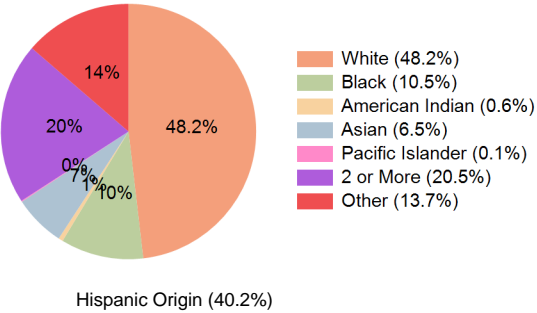
Education (10 Minute Drive)



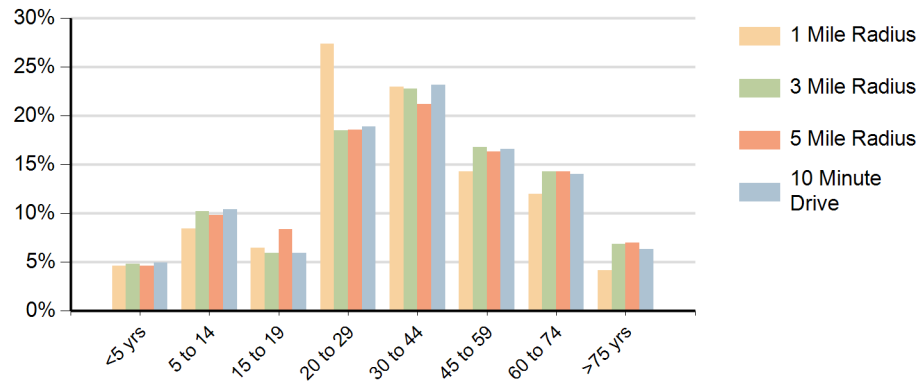
Daytime Population (10 Minute Drive)



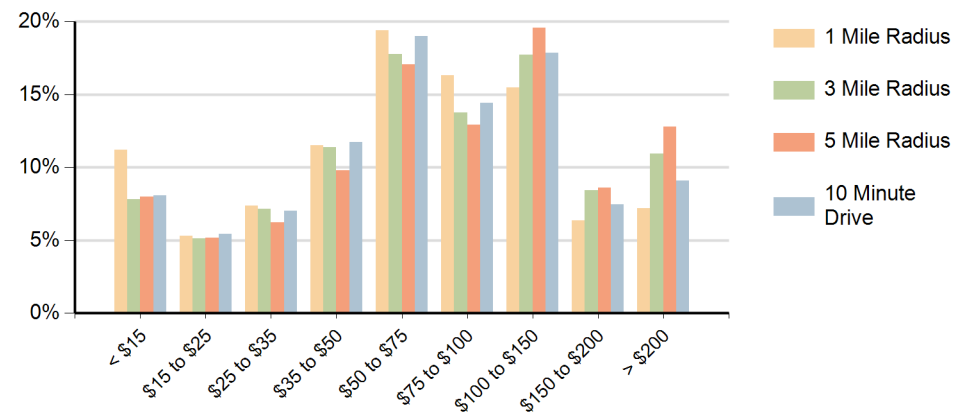
Race (10 Minute Drive)



Population by Age Range



Households by Income Range (\$000)



Unigold Shopping Center Winter Park, Florida		1 Mile Radius	3 Mile Radius	5 Mile Radius	10 Minute Drive
Population	Current Estimated Population	14,597	108,171	283,766	116,930
	2020 Census Population	14,009	103,118	275,665	111,970
	2010 Census Population	11,664	93,261	243,323	100,831
	Historical Annual Growth 2010 to 2020	1.9%	1.0%	1.3%	1.1%
	Estimated Annual Growth 2020 to 2025	0.8%	0.9%	0.6%	0.8%
	Projected Annual Growth 2025 to 2030	0.7%	0.7%	0.5%	0.8%
Households	Current Estimated Households	6,240	43,842	109,931	46,786
	2020 Census Households	5,992	41,579	106,221	44,604
	2010 Census Households	5,279	38,717	96,313	41,242
	Historical Annual Growth 2010 to 2020	1.3%	0.7%	1.0%	0.8%
	Estimated Annual Growth 2020 to 2025	0.8%	1.0%	0.7%	0.9%
	Projected Annual Growth 2025 to 2030	0.7%	0.8%	0.6%	0.8%
Race	Population per Household	2.3	2.4	2.5	2.5
	White	45.4%	51.4%	54.2%	48.2%
	Black or African American	12.7%	9.9%	8.9%	10.5%
	American Indian	0.7%	0.6%	0.5%	0.6%
	Asian	8.8%	6.4%	5.8%	6.5%
	Pacific Islander	0.2%	0.1%	0.1%	0.1%
	2 or More Races	19.4%	19.5%	19.0%	20.5%
	Other Races	12.9%	12.2%	11.5%	13.7%
Hispanic Origin		37.8%	36.5%	35.2%	40.2%