

**Vons Circle Center**  
Long Beach, California

**1 Mile Radius**

**3 Mile Radius**

**5 Mile Radius**

**10 Minute Drive**

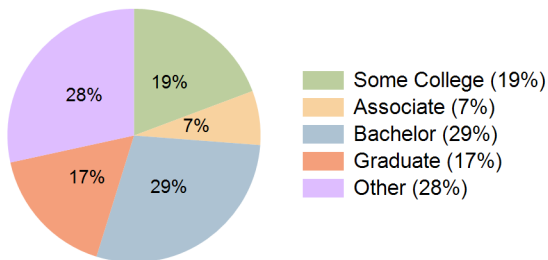
### Current Year Demographics

Current Population	28,673	229,795	514,825	174,962
Total Daytime Pop	27,625	216,890	505,056	176,190
Daytime Workers	14,135	105,570	245,942	90,493
Average Household Income	\$123,911	\$124,872	\$124,391	\$130,859
Median Household Income	\$91,618	\$87,376	\$87,844	\$93,949
Total Households	11,784	93,225	200,214	68,516
Median Home Value	\$855,995	\$901,586	\$842,383	\$897,855
Bachelors Degree	33.1%	28.1%	26.3%	28.6%
Graduate Degree	15.9%	15.9%	14.7%	16.8%
Consumer Spending Index	109	109	109	114

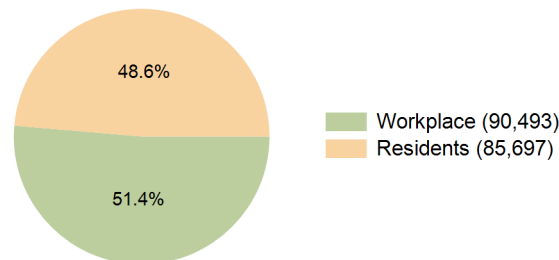
### 2029 Demographic Projections

Projected Population	27,887	222,487	501,658	169,122
Projected 5 Year Annual Growth Rate (Pop)	-0.6%	-0.6%	-0.5%	-0.7%
Projected Households	11,735	92,827	201,041	68,059
Projected 5 Year Annual Growth Rate (HH)	-0.1%	-0.1%	0.1%	-0.1%

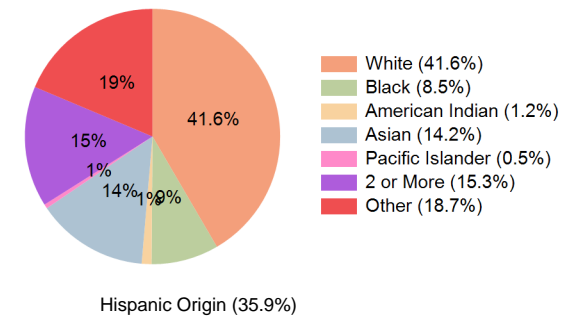
**Education (10 Minute Drive)**



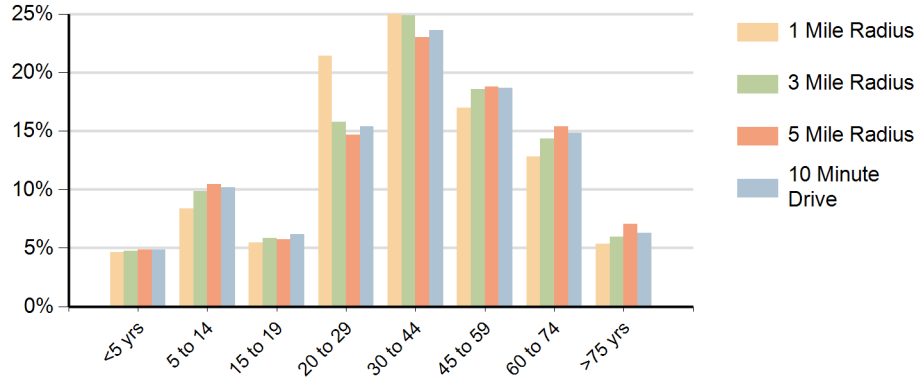
**Daytime Population (10 Minute Drive)**



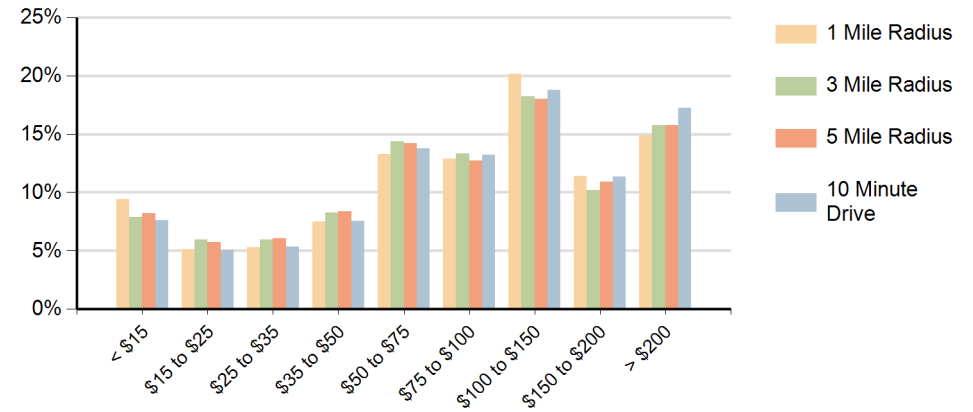
**Race (10 Minute Drive)**



## Population by Age Range



## Households by Income Range (\$000)



Vons Circle Center Long Beach, California		1 Mile Radius	3 Mile Radius	5 Mile Radius	10 Minute Drive
Population	Current Estimated Population	28,673	229,795	514,825	174,962
	2020 Census Population	29,858	238,806	530,951	182,294
	2010 Census Population	28,352	238,588	521,884	180,715
	Historical Annual Growth 2010 to 2020	0.5%	0.0%	0.2%	0.1%
	Estimated Annual Growth 2020 to 2024	-1.0%	-0.9%	-0.7%	-1.0%
	Projected Annual Growth 2024 to 2029	-0.6%	-0.6%	-0.5%	-0.7%
Households	Current Estimated Households	11,784	93,225	200,214	68,516
	2020 Census Households	11,913	94,322	200,754	69,456
	2010 Census Households	11,749	92,300	193,420	67,992
	Historical Annual Growth 2010 to 2020	0.1%	0.2%	0.4%	0.2%
	Estimated Annual Growth 2020 to 2024	-0.3%	-0.3%	-0.1%	-0.3%
	Projected Annual Growth 2024 to 2029	-0.1%	-0.1%	0.1%	-0.1%
Population per Household		2.3	2.4	2.5	2.5
Race	White	41.4%	40.3%	36.2%	41.6%
	Black or African American	10.4%	9.0%	10.2%	8.5%
	American Indian	1.4%	1.4%	1.3%	1.2%
	Asian	14.8%	13.1%	15.0%	14.2%
	Pacific Islander	0.6%	0.5%	0.7%	0.5%
	2 or More Races	15.8%	14.9%	15.1%	15.3%
	Other Races	15.6%	20.9%	21.4%	18.7%
	Hispanic Origin	33.3%	38.2%	39.1%	35.9%