

The Hub at Norwalk
Norwalk, Connecticut

1 Mile Radius

3 Mile Radius

5 Mile Radius

10 Minute Drive

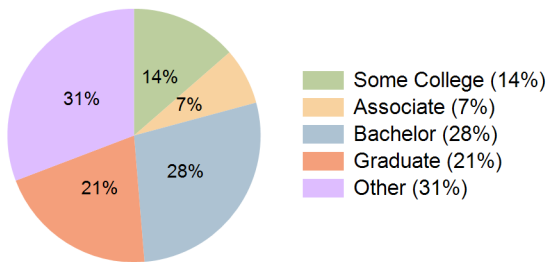
Current Year Demographics

Current Population	8,030	83,333	185,482	88,900
Total Daytime Pop	10,141	86,007	180,642	91,775
Daytime Workers	6,168	47,346	94,591	50,862
Average Household Income	\$186,414	\$166,052	\$175,374	\$164,522
Median Household Income	\$127,909	\$105,544	\$116,068	\$103,820
Total Households	3,073	31,615	70,888	33,346
Median Home Value	\$643,082	\$661,815	\$656,877	\$647,685
Bachelors Degree	30.7%	28.2%	30.1%	27.9%
Graduate Degree	21.1%	21.3%	23.4%	20.5%
Consumer Spending Index	161	145	152	144

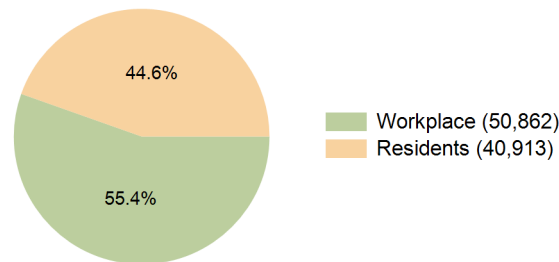
2029 Demographic Projections

Projected Population	7,918	83,296	184,110	88,805
Projected 5 Year Annual Growth Rate (Pop)	-0.3%	0.0%	-0.2%	0.0%
Projected Households	3,079	32,236	71,562	33,967
Projected 5 Year Annual Growth Rate (HH)	0.0%	0.4%	0.2%	0.4%

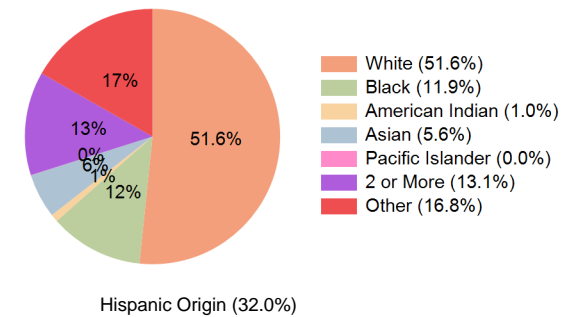
Education (10 Minute Drive)



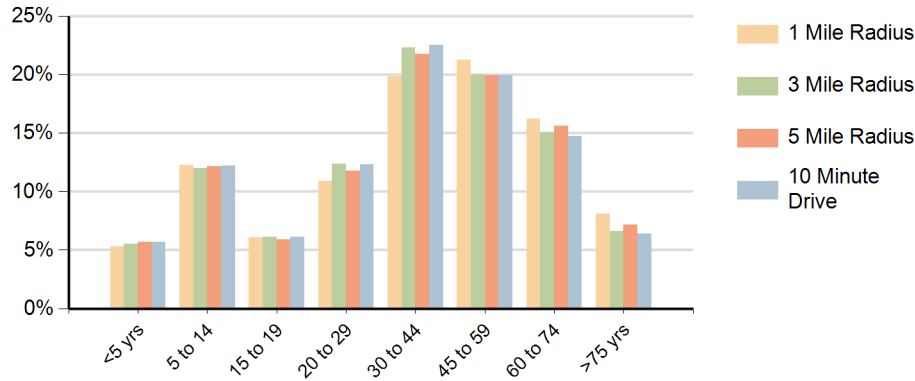
Daytime Population (10 Minute Drive)



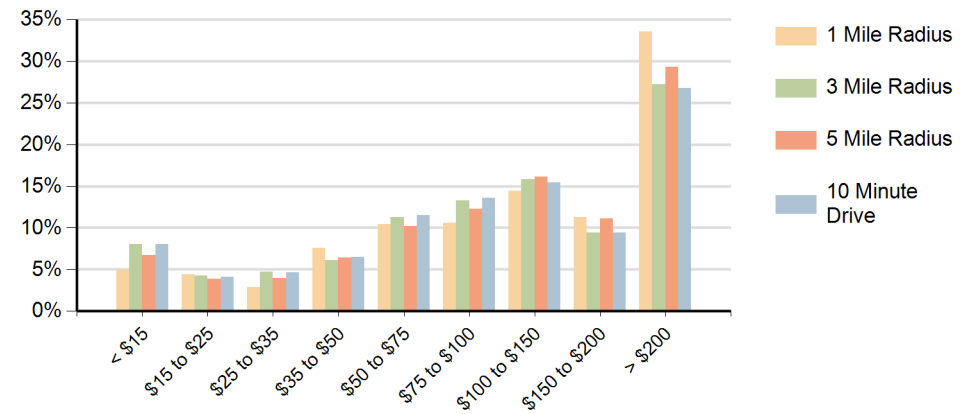
Race (10 Minute Drive)



Population by Age Range



Households by Income Range (\$000)



The Hub at Norwalk Norwalk, Connecticut		1 Mile Radius	3 Mile Radius	5 Mile Radius	10 Minute Drive
Population	Current Estimated Population	8,030	83,333	185,482	88,900
	2020 Census Population	8,053	82,172	183,534	87,845
	2010 Census Population	7,901	77,739	174,546	83,305
	Historical Annual Growth 2010 to 2020	0.2%	0.6%	0.5%	0.5%
	Estimated Annual Growth 2020 to 2024	-0.1%	0.3%	0.3%	0.3%
	Projected Annual Growth 2024 to 2029	-0.3%	0.0%	-0.2%	0.0%
Households	Current Estimated Households	3,073	31,615	70,888	33,346
	2020 Census Households	3,059	31,003	69,529	32,726
	2010 Census Households	2,949	29,005	66,158	30,643
	Historical Annual Growth 2010 to 2020	0.4%	0.7%	0.5%	0.7%
	Estimated Annual Growth 2020 to 2024	0.1%	0.5%	0.5%	0.4%
	Projected Annual Growth 2024 to 2029	0.0%	0.4%	0.2%	0.4%
Population per Household		2.6	2.6	2.6	2.7
Race	White	59.3%	52.6%	57.9%	51.6%
	Black or African American	9.7%	11.8%	9.4%	11.9%
	American Indian	0.6%	0.9%	0.8%	1.0%
	Asian	6.3%	5.3%	6.6%	5.6%
	Pacific Islander	0.0%	0.0%	0.0%	0.0%
	2 or More Races	12.0%	13.0%	12.1%	13.1%
	Other Races	12.2%	16.4%	13.3%	16.8%
	Hispanic Origin	25.2%	31.3%	26.5%	32.0%