

Westbury Plaza
Westbury, New York

1 Mile Radius

3 Mile Radius

5 Mile Radius

10 Minute Drive

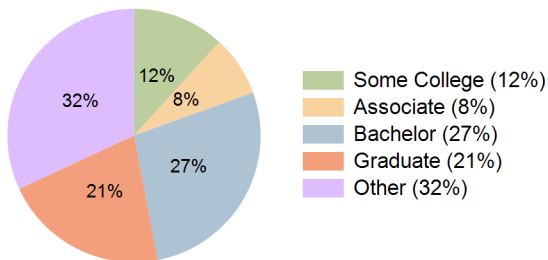
Current Year Demographics

Current Population	14,210	169,111	462,702	80,620
Total Daytime Pop	28,424	200,543	451,813	115,150
Daytime Workers	21,659	116,974	223,196	75,779
Average Household Income	\$169,516	\$169,387	\$182,403	\$185,229
Median Household Income	\$124,042	\$121,287	\$135,319	\$135,724
Total Households	5,561	52,335	141,528	25,300
Median Home Value	\$715,105	\$667,748	\$687,196	\$698,088
Bachelors Degree	28.1%	23.7%	25.7%	27.5%
Graduate Degree	24.5%	18.9%	20.8%	21.1%
Consumer Spending Index	146	147	157	159

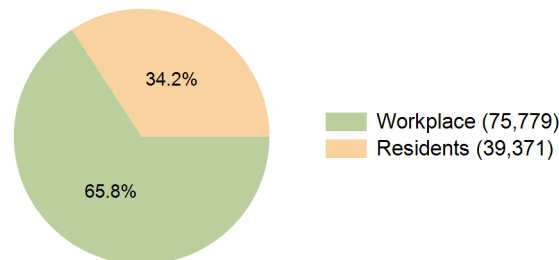
2029 Demographic Projections

Projected Population	14,511	170,428	464,556	81,700
Projected 5 Year Annual Growth Rate (Pop)	0.4%	0.2%	0.1%	0.3%
Projected Households	5,680	52,685	141,718	25,627
Projected 5 Year Annual Growth Rate (HH)	0.4%	0.1%	0.0%	0.3%

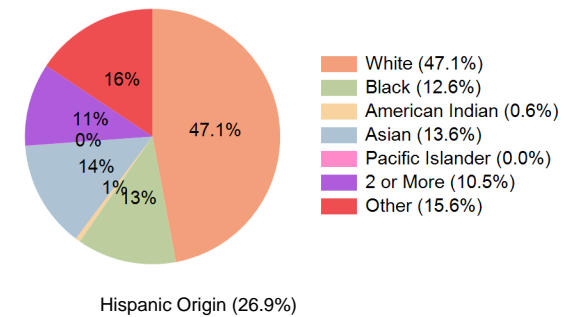
Education (10 Minute Drive)



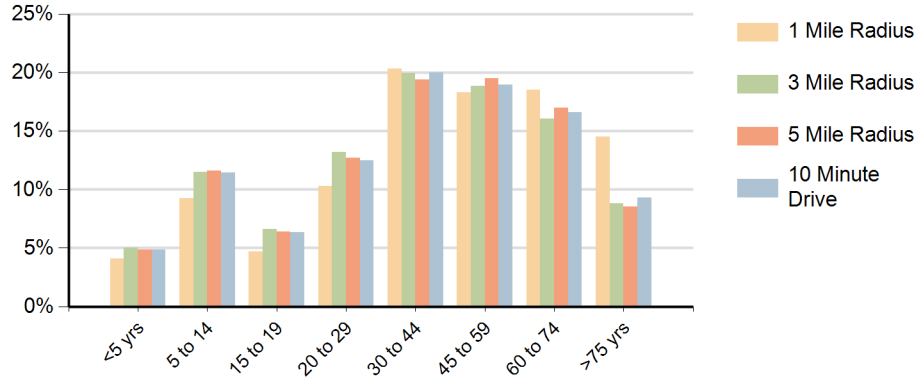
Daytime Population (10 Minute Drive)



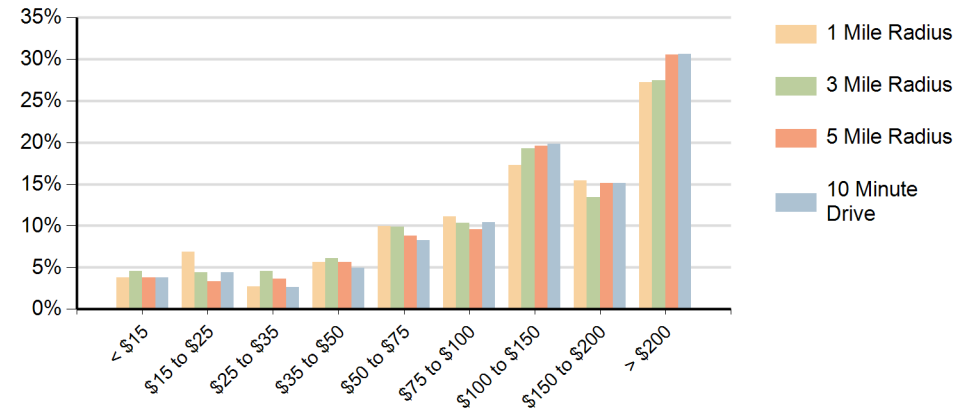
Race (10 Minute Drive)



Population by Age Range



Households by Income Range (\$000)



Westbury Plaza Westbury, New York		1 Mile Radius	3 Mile Radius	5 Mile Radius	10 Minute Drive
Population	Current Estimated Population	14,210	169,111	462,702	80,620
	2020 Census Population	13,740	167,357	463,549	79,873
	2010 Census Population	12,382	158,375	443,639	76,112
	Historical Annual Growth 2010 to 2020	1.1%	0.6%	0.4%	0.5%
	Estimated Annual Growth 2020 to 2024	0.8%	0.3%	0.0%	0.2%
	Projected Annual Growth 2024 to 2029	0.4%	0.2%	0.1%	0.3%
Households	Current Estimated Households	5,561	52,335	141,528	25,300
	2020 Census Households	5,409	52,308	142,344	25,091
	2010 Census Households	4,912	49,742	139,518	23,893
	Historical Annual Growth 2010 to 2020	1.0%	0.5%	0.2%	0.5%
	Estimated Annual Growth 2020 to 2024	0.7%	0.0%	-0.1%	0.2%
	Projected Annual Growth 2024 to 2029	0.4%	0.1%	0.0%	0.3%
Population per Household		2.5	3.1	3.2	3.1
Race	White	61.0%	40.7%	44.0%	47.1%
	Black or African American	5.4%	16.9%	14.1%	12.6%
	American Indian	0.5%	0.7%	0.6%	0.6%
	Asian	10.1%	12.0%	17.9%	13.6%
	Pacific Islander	0.0%	0.0%	0.0%	0.0%
	2 or More Races	10.0%	10.3%	9.3%	10.5%
	Other Races	13.1%	19.4%	14.2%	15.6%
	Hispanic Origin	23.1%	30.8%	23.9%	26.9%