

Brea Marketplace  
Brea, California

1 Mile Radius

3 Mile Radius

5 Mile Radius

10 Minute Drive

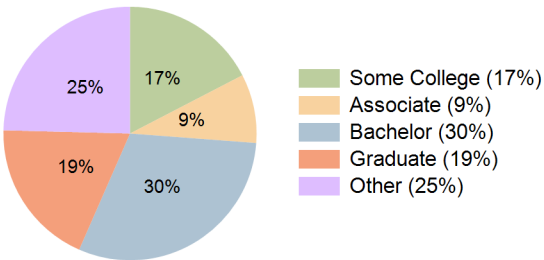
Current Year Demographics

Current Population	21,230	123,865	354,256	127,768
Total Daytime Pop	32,240	140,217	357,364	147,875
Daytime Workers	21,984	77,518	176,383	82,844
Average Household Income	\$146,409	\$151,612	\$146,345	\$146,860
Median Household Income	\$110,399	\$111,936	\$107,666	\$108,491
Total Households	8,207	44,104	119,778	45,297
Median Home Value	\$863,171	\$923,918	\$917,761	\$913,530
Bachelors Degree	31.4%	30.9%	28.5%	30.4%
Graduate Degree	17.6%	19.1%	16.3%	18.8%
Consumer Spending Index	127	132	127	128

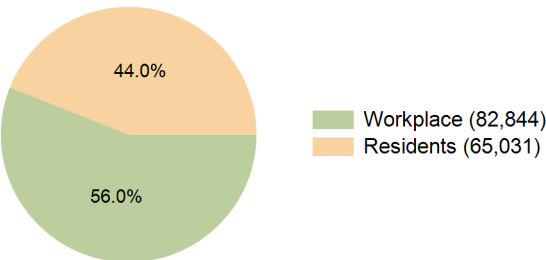
2029 Demographic Projections

Projected Population	21,159	122,697	350,895	127,157
Projected 5 Year Annual Growth Rate (Pop)	-0.1%	-0.2%	-0.2%	-0.1%
Projected Households	8,416	44,906	122,140	46,418
Projected 5 Year Annual Growth Rate (HH)	0.5%	0.4%	0.4%	0.5%

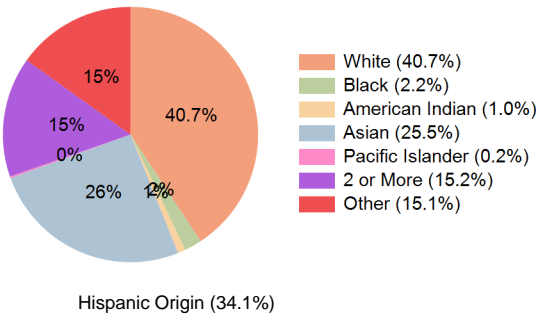
Education (10 Minute Drive)



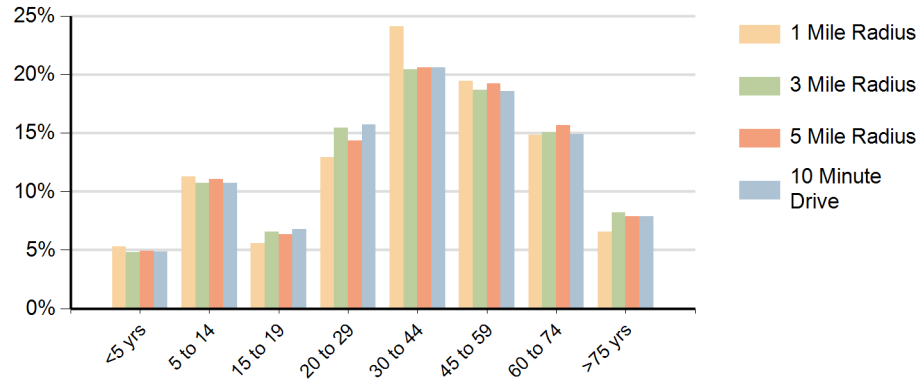
Daytime Population (10 Minute Drive)



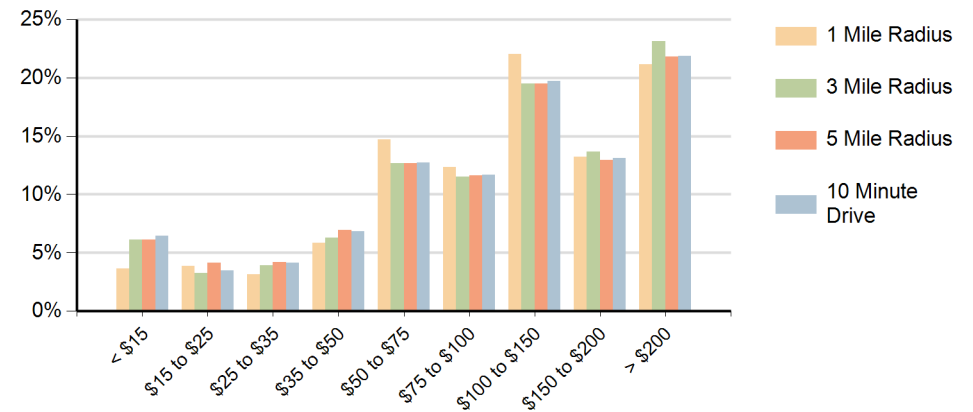
Race (10 Minute Drive)



### Population by Age Range



### Households by Income Range (\$000)



Brea Marketplace Brea, California		1 Mile Radius	3 Mile Radius	5 Mile Radius	10 Minute Drive
Population	Current Estimated Population	21,230	123,865	354,256	127,768
	2020 Census Population	19,922	124,616	358,838	127,853
	2010 Census Population	17,968	111,951	338,890	115,038
	Historical Annual Growth 2010 to 2020	1.0%	1.1%	0.6%	1.1%
	Estimated Annual Growth 2020 to 2024	1.5%	-0.1%	-0.3%	0.0%
	Projected Annual Growth 2024 to 2029	-0.1%	-0.2%	-0.2%	-0.1%
Households	Current Estimated Households	8,207	44,104	119,778	45,297
	2020 Census Households	7,610	43,655	118,918	44,573
	2010 Census Households	6,841	39,723	111,047	40,592
	Historical Annual Growth 2010 to 2020	1.1%	1.0%	0.7%	0.9%
	Estimated Annual Growth 2020 to 2024	1.8%	0.2%	0.2%	0.4%
	Projected Annual Growth 2024 to 2029	0.5%	0.4%	0.4%	0.5%
Race	Population per Household	2.6	2.8	2.9	2.8
	White	42.2%	43.2%	34.7%	40.7%
	Black or African American	2.0%	2.2%	1.9%	2.2%
	American Indian	0.9%	0.9%	1.2%	1.0%
	Asian	24.3%	24.0%	27.8%	25.5%
	Pacific Islander	0.2%	0.2%	0.2%	0.2%
	2 or More Races	16.5%	15.6%	15.8%	15.2%
	Other Races	13.9%	13.9%	18.4%	15.1%
Hispanic Origin		34.2%	33.1%	39.1%	34.1%