

Laguna Niguel Plaza
Laguna Niguel, California

1 Mile Radius

3 Mile Radius

5 Mile Radius

10 Minute Drive

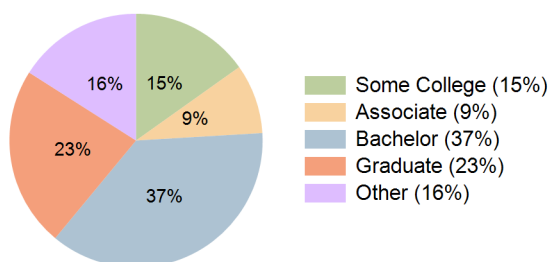
Current Year Demographics

Current Population	11,233	96,234	236,061	125,819
Total Daytime Pop	10,270	86,924	237,834	118,755
Daytime Workers	4,536	41,066	124,440	60,456
Average Household Income	\$199,246	\$202,584	\$189,156	\$185,929
Median Household Income	\$144,807	\$146,079	\$136,904	\$137,189
Total Households	4,693	38,549	93,981	50,701
Median Home Value	\$1,357,443	\$1,325,792	\$1,242,683	\$1,184,024
Bachelors Degree	33.8%	36.7%	36.2%	37.0%
Graduate Degree	26.9%	24.7%	22.7%	23.0%
Consumer Spending Index	166	170	159	156

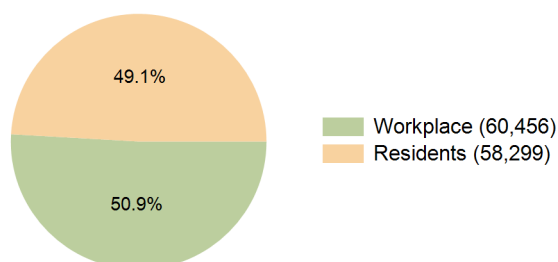
2030 Demographic Projections

Projected Population	11,615	96,161	235,482	125,558
Projected 5 Year Annual Growth Rate (Pop)	0.7%	0.0%	-0.1%	0.0%
Projected Households	4,969	39,232	95,389	51,530
Projected 5 Year Annual Growth Rate (HH)	1.2%	0.4%	0.3%	0.3%

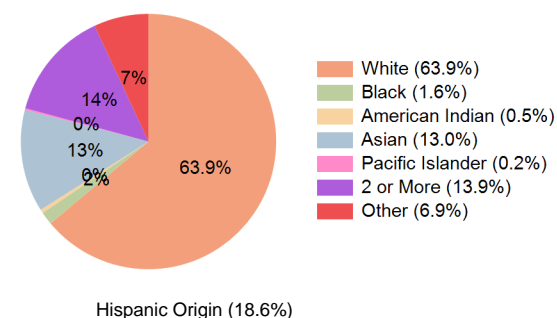
Education (10 Minute Drive)



Daytime Population (10 Minute Drive)

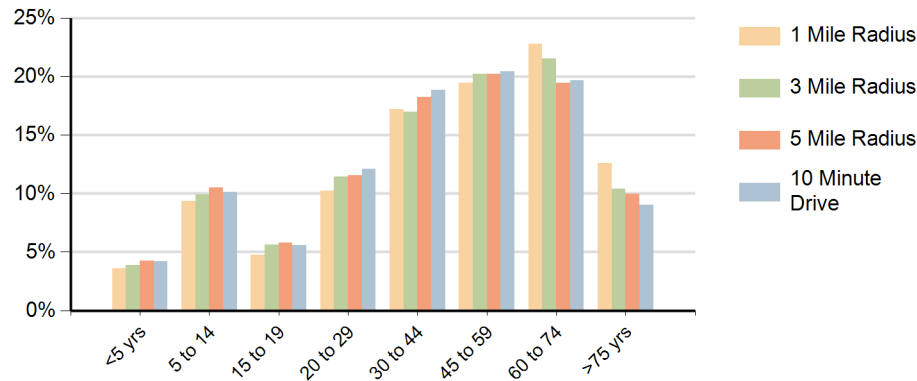


Race (10 Minute Drive)

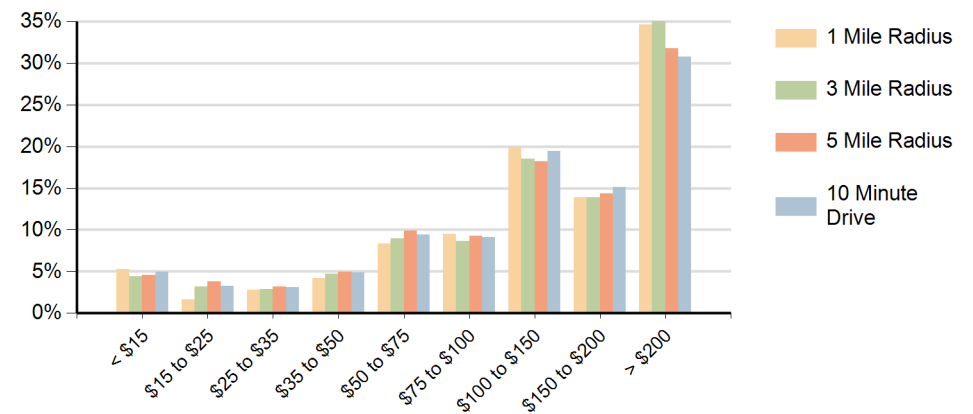


Hispanic Origin (18.6%)

Population by Age Range



Households by Income Range (\$000)



Laguna Niguel Plaza Laguna Niguel, California		1 Mile Radius	3 Mile Radius	5 Mile Radius	10 Minute Drive
Population	Current Estimated Population	11,233	96,234	236,061	125,819
	2020 Census Population	11,649	99,057	240,316	128,293
	2010 Census Population	11,392	97,445	231,852	123,754
	Historical Annual Growth 2010 to 2020	0.2%	0.2%	0.4%	0.4%
	Estimated Annual Growth 2020 to 2025	-0.7%	-0.6%	-0.3%	-0.4%
	Projected Annual Growth 2025 to 2030	0.7%	0.0%	-0.1%	0.0%
Households	Current Estimated Households	4,693	38,549	93,981	50,701
	2020 Census Households	4,691	38,634	93,218	50,480
	2010 Census Households	4,433	37,627	89,142	48,252
	Historical Annual Growth 2010 to 2020	0.6%	0.3%	0.5%	0.5%
	Estimated Annual Growth 2020 to 2025	0.0%	0.0%	0.2%	0.1%
	Projected Annual Growth 2025 to 2030	1.2%	0.4%	0.3%	0.3%
Race	Population per Household	2.4	2.5	2.5	2.5
	White	70.2%	66.6%	63.9%	63.9%
	Black or African American	1.6%	1.3%	1.3%	1.6%
	American Indian	0.5%	0.5%	0.7%	0.5%
	Asian	10.6%	10.7%	10.8%	13.0%
	Pacific Islander	0.1%	0.1%	0.2%	0.2%
	2 or More Races	13.2%	13.5%	14.1%	13.9%
	Other Races	3.8%	7.2%	9.1%	6.9%
Hispanic Origin		14.0%	18.5%	21.9%	18.6%