

Navajo Shopping Center
San Diego, California

1 Mile Radius

3 Mile Radius

5 Mile Radius

10 Minute Drive

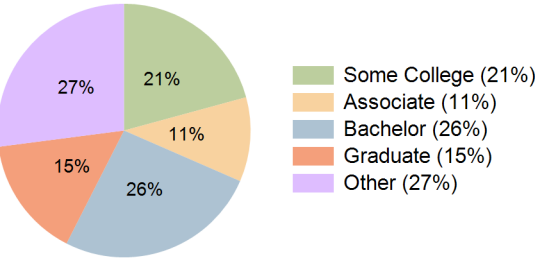
Current Year Demographics

Current Population	18,482	125,525	384,738	173,830
Total Daytime Pop	13,435	125,442	346,022	175,318
Daytime Workers	4,237	62,911	146,740	86,992
Average Household Income	\$146,710	\$133,194	\$123,382	\$127,886
Median Household Income	\$113,898	\$100,475	\$90,823	\$95,985
Total Households	6,981	49,799	140,232	67,089
Median Home Value	\$823,154	\$832,385	\$802,705	\$818,597
Bachelors Degree	30.5%	27.7%	24.6%	26.0%
Graduate Degree	18.8%	16.5%	13.9%	15.5%
Consumer Spending Index	126	116	108	112

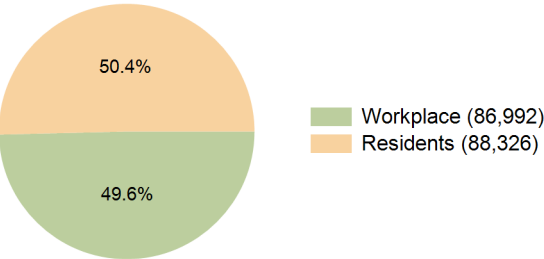
2029 Demographic Projections

Projected Population	18,207	124,943	382,796	173,079
Projected 5 Year Annual Growth Rate (Pop)	-0.3%	-0.1%	-0.1%	-0.1%
Projected Households	7,002	50,452	141,996	67,993
Projected 5 Year Annual Growth Rate (HH)	0.1%	0.3%	0.3%	0.3%

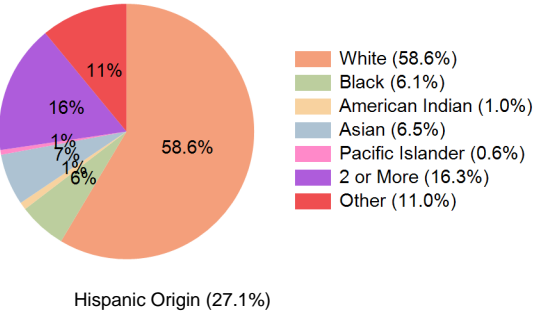
Education (10 Minute Drive)



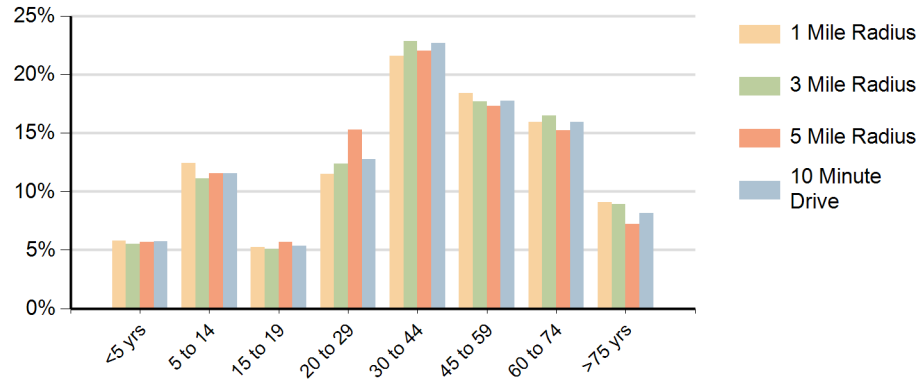
Daytime Population (10 Minute Drive)



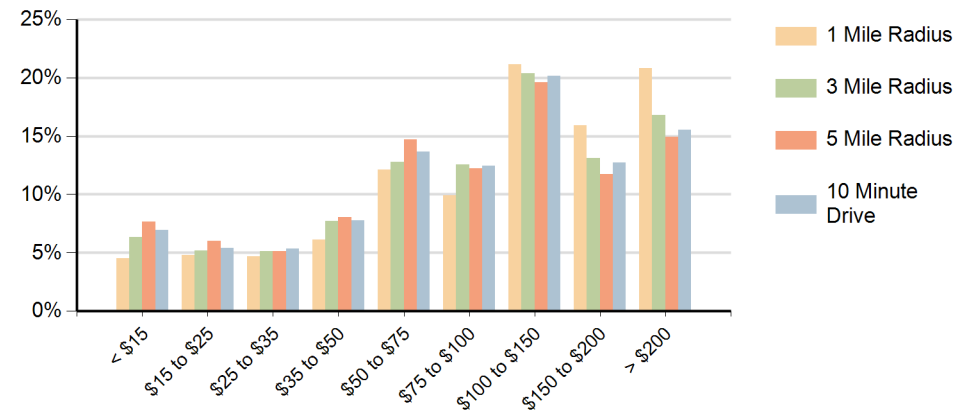
Race (10 Minute Drive)



Population by Age Range



Households by Income Range (\$000)



Navajo Shopping Center San Diego, California		1 Mile Radius	3 Mile Radius	5 Mile Radius	10 Minute Drive
Population	Current Estimated Population	18,482	125,525	384,738	173,830
	2020 Census Population	18,796	126,528	387,693	175,322
	2010 Census Population	17,703	118,046	355,772	162,605
	Historical Annual Growth 2010 to 2020	0.6%	0.7%	0.9%	0.8%
	Estimated Annual Growth 2020 to 2024	-0.4%	-0.2%	-0.2%	-0.2%
	Projected Annual Growth 2024 to 2029	-0.3%	-0.1%	-0.1%	-0.1%
Households	Current Estimated Households	6,981	49,799	140,232	67,089
	2020 Census Households	7,045	49,616	139,684	66,810
	2010 Census Households	6,915	48,196	133,649	64,457
	Historical Annual Growth 2010 to 2020	0.2%	0.3%	0.4%	0.4%
	Estimated Annual Growth 2020 to 2024	-0.2%	0.1%	0.1%	0.1%
	Projected Annual Growth 2024 to 2029	0.1%	0.3%	0.3%	0.3%
Race	Population per Household	2.6	2.5	2.7	2.6
	White	63.4%	61.0%	56.3%	58.6%
	Black or African American	5.3%	5.5%	6.7%	6.1%
	American Indian	0.7%	1.0%	1.0%	1.0%
	Asian	7.3%	6.5%	7.2%	6.5%
	Pacific Islander	0.6%	0.6%	0.6%	0.6%
	2 or More Races	16.6%	16.1%	15.9%	16.3%
	Other Races	6.2%	9.4%	12.4%	11.0%
Hispanic Origin		21.4%	25.0%	28.7%	27.1%