

Pleasant Hill Shopping Center
Pleasant Hill, California

1 Mile Radius

3 Mile Radius

5 Mile Radius

10 Minute Drive

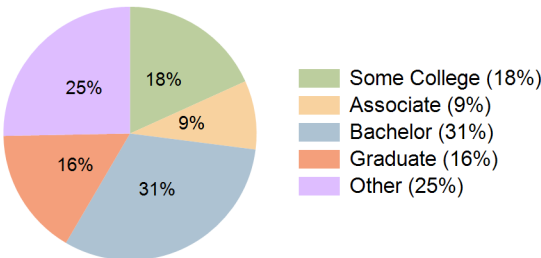
Current Year Demographics

Current Population	9,265	130,063	238,057	140,008
Total Daytime Pop	20,287	145,563	263,728	176,694
Daytime Workers	15,887	82,130	148,051	111,437
Average Household Income	\$144,773	\$154,152	\$169,801	\$155,241
Median Household Income	\$109,207	\$114,297	\$124,791	\$116,256
Total Households	3,662	48,947	92,551	55,129
Median Home Value	\$670,000	\$806,378	\$861,855	\$792,724
Bachelors Degree	31.6%	29.3%	32.2%	31.4%
Graduate Degree	11.6%	15.4%	19.0%	16.3%
Consumer Spending Index	126	134	147	135

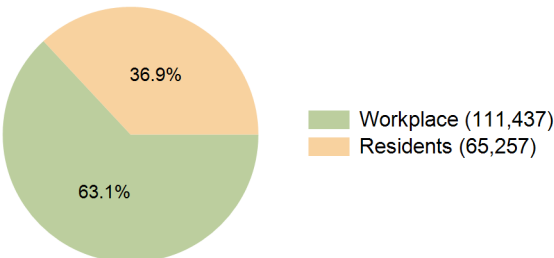
2029 Demographic Projections

Projected Population	9,415	131,285	239,901	141,848
Projected 5 Year Annual Growth Rate (Pop)	0.3%	0.2%	0.2%	0.3%
Projected Households	3,698	49,147	92,807	55,647
Projected 5 Year Annual Growth Rate (HH)	0.2%	0.1%	0.1%	0.2%

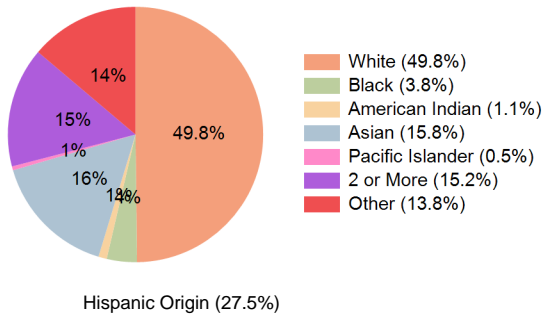
Education (10 Minute Drive)



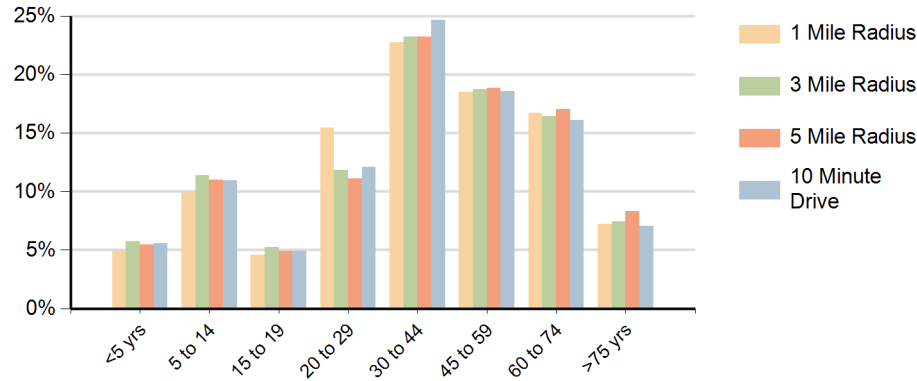
Daytime Population (10 Minute Drive)



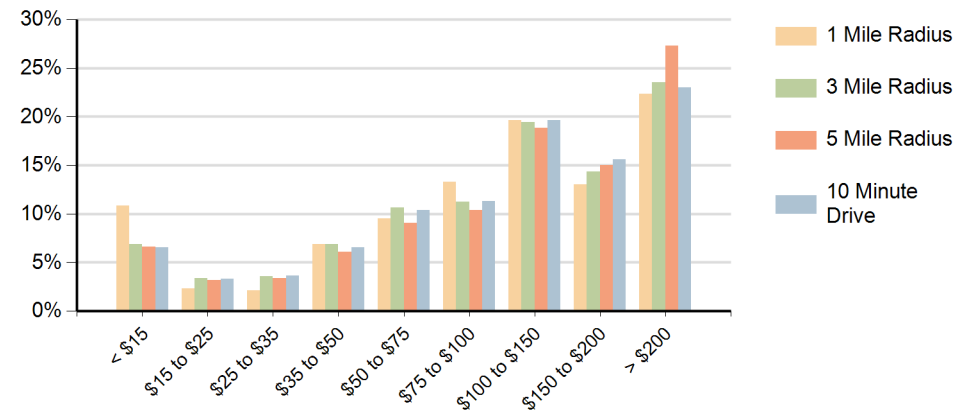
Race (10 Minute Drive)



Population by Age Range



Households by Income Range (\$000)



Pleasant Hill Shopping Center Pleasant Hill, California		1 Mile Radius	3 Mile Radius	5 Mile Radius	10 Minute Drive
Population	Current Estimated Population	9,265	130,063	238,057	140,008
	2020 Census Population	9,252	130,056	238,482	140,013
	2010 Census Population	8,585	124,778	226,003	131,488
	Historical Annual Growth 2010 to 2020	0.8%	0.4%	0.5%	0.6%
	Estimated Annual Growth 2020 to 2024	0.0%	0.0%	0.0%	0.0%
	Projected Annual Growth 2024 to 2029	0.3%	0.2%	0.2%	0.3%
Households	Current Estimated Households	3,662	48,947	92,551	55,129
	2020 Census Households	3,629	48,873	92,687	54,916
	2010 Census Households	3,521	47,108	88,645	51,934
	Historical Annual Growth 2010 to 2020	0.3%	0.4%	0.5%	0.6%
	Estimated Annual Growth 2020 to 2024	0.2%	0.0%	0.0%	0.1%
	Projected Annual Growth 2024 to 2029	0.2%	0.1%	0.1%	0.2%
Race	Population per Household	2.5	2.6	2.5	2.5
	White	47.5%	47.5%	52.3%	49.8%
	Black or African American	2.9%	3.5%	3.4%	3.8%
	American Indian	0.8%	1.1%	0.9%	1.1%
	Asian	22.6%	15.6%	16.3%	15.8%
	Pacific Islander	0.6%	0.5%	0.4%	0.5%
	2 or More Races	15.5%	15.4%	14.7%	15.2%
	Other Races	10.0%	16.3%	12.0%	13.8%
Hispanic Origin		22.6%	30.6%	24.6%	27.5%