

Alcove on Arapahoe
Boulder, Colorado

1 Mile Radius

3 Mile Radius

5 Mile Radius

10 Minute Drive

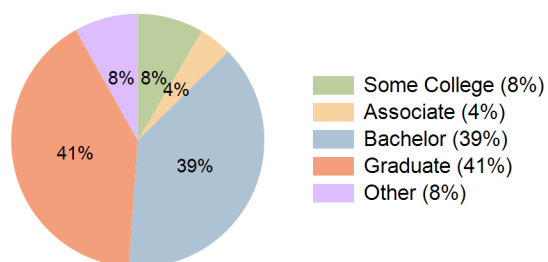
Current Year Demographics

Current Population	29,255	102,293	119,278	99,803
Total Daytime Pop	65,997	156,436	175,481	152,613
Daytime Workers	50,699	108,687	120,614	106,402
Average Household Income	\$73,264	\$137,465	\$142,139	\$134,633
Median Household Income	\$38,834	\$79,592	\$85,655	\$78,102
Total Households	11,168	41,270	48,875	40,213
Median Home Value	\$919,864	\$1,074,361	\$1,063,970	\$1,058,916
Bachelors Degree	36.1%	38.3%	37.9%	38.5%
Graduate Degree	37.8%	40.9%	40.7%	40.7%
Consumer Spending Index	65	118	122	116

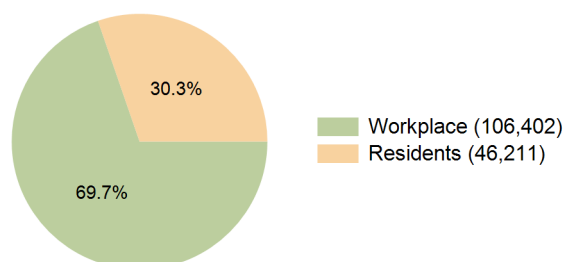
2030 Demographic Projections

Projected Population	29,649	103,360	120,426	100,865
Projected 5 Year Annual Growth Rate (Pop)	0.3%	0.2%	0.2%	0.2%
Projected Households	11,452	42,047	49,718	40,982
Projected 5 Year Annual Growth Rate (HH)	0.5%	0.4%	0.3%	0.4%

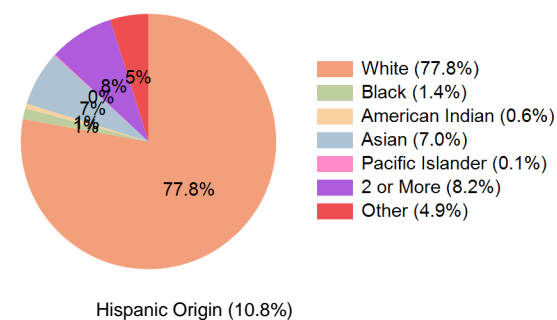
Education (10 Minute Drive)



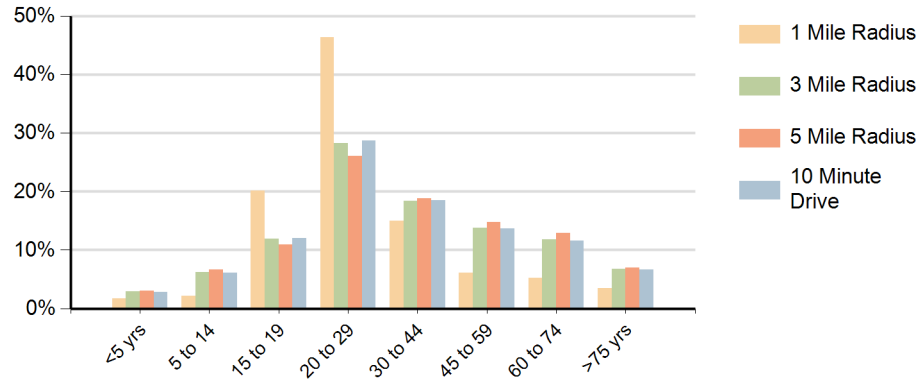
Daytime Population (10 Minute Drive)



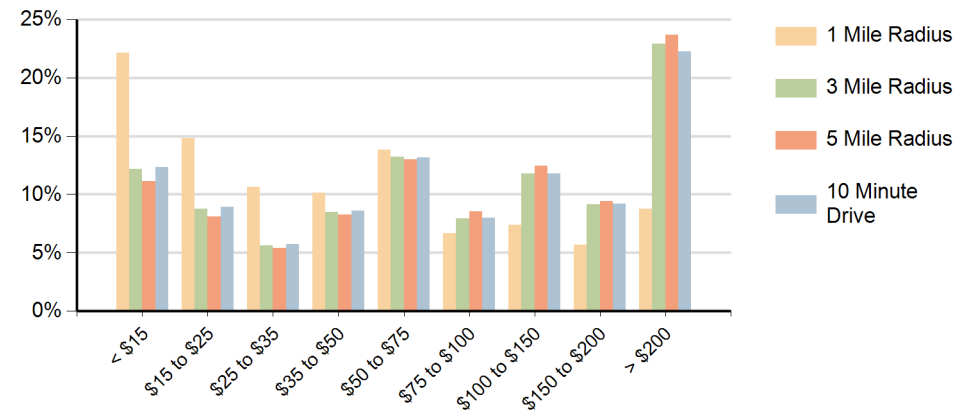
Race (10 Minute Drive)



Population by Age Range



Households by Income Range (\$000)



Alcove on Arapahoe Boulder, Colorado		1 Mile Radius	3 Mile Radius	5 Mile Radius	10 Minute Drive
Population	Current Estimated Population	29,255	102,293	119,278	99,803
	2020 Census Population	28,828	101,473	118,882	98,962
	2010 Census Population	23,997	92,828	109,148	90,375
	Historical Annual Growth 2010 to 2020	1.9%	0.9%	0.9%	0.9%
	Estimated Annual Growth 2020 to 2025	0.3%	0.2%	0.1%	0.2%
	Projected Annual Growth 2025 to 2030	0.3%	0.2%	0.2%	0.2%
Households	Current Estimated Households	11,168	41,270	48,875	40,213
	2020 Census Households	10,930	40,497	48,038	39,447
	2010 Census Households	9,878	39,312	46,515	38,296
	Historical Annual Growth 2010 to 2020	1.0%	0.3%	0.3%	0.3%
	Estimated Annual Growth 2020 to 2025	0.4%	0.4%	0.3%	0.4%
	Projected Annual Growth 2025 to 2030	0.5%	0.4%	0.3%	0.4%
Race	Population per Household	1.9	2.2	2.2	2.2
	White	74.8%	77.9%	78.0%	77.8%
	Black or African American	1.8%	1.4%	1.3%	1.4%
	American Indian	0.7%	0.6%	0.6%	0.6%
	Asian	11.3%	6.9%	6.6%	7.0%
	Pacific Islander	0.2%	0.1%	0.1%	0.1%
	2 or More Races	6.4%	8.3%	8.5%	8.2%
	Other Races	4.7%	4.9%	4.8%	4.9%
Hispanic Origin		9.5%	10.8%	11.0%	10.8%