

Applewood Village
Wheat Ridge, Colorado

1 Mile Radius

3 Mile Radius

5 Mile Radius

10 Minute Drive

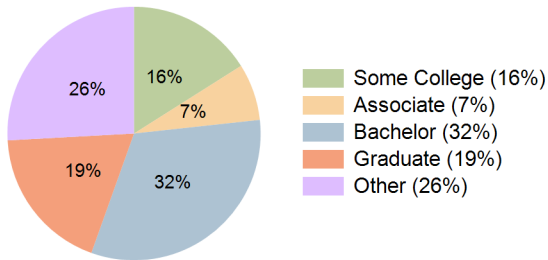
Current Year Demographics

| | | | | |
|--------------------------|-----------|-----------|-----------|-----------|
| Current Population | 7,622 | 69,081 | 237,057 | 83,282 |
| Total Daytime Pop | 8,296 | 86,566 | 262,723 | 104,548 |
| Daytime Workers | 4,521 | 54,771 | 160,154 | 66,639 |
| Average Household Income | \$192,134 | \$138,093 | \$135,412 | \$136,425 |
| Median Household Income | \$141,365 | \$98,156 | \$96,953 | \$99,030 |
| Total Households | 3,159 | 29,698 | 101,518 | 35,890 |
| Median Home Value | \$813,212 | \$724,392 | \$688,379 | \$709,139 |
| Bachelors Degree | 39.2% | 33.1% | 31.8% | 32.2% |
| Graduate Degree | 25.4% | 18.6% | 18.5% | 18.7% |
| Consumer Spending Index | 166 | 121 | 119 | 120 |

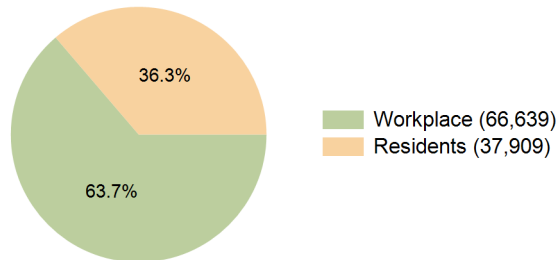
2029 Demographic Projections

| | | | | |
|---|-------|--------|---------|--------|
| Projected Population | 7,616 | 70,832 | 240,459 | 85,373 |
| Projected 5 Year Annual Growth Rate (Pop) | 0.0% | 0.5% | 0.3% | 0.5% |
| Projected Households | 3,146 | 30,474 | 103,181 | 36,826 |
| Projected 5 Year Annual Growth Rate (HH) | -0.1% | 0.5% | 0.3% | 0.5% |

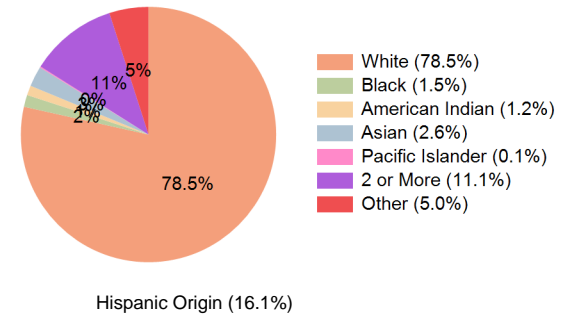
Education (10 Minute Drive)



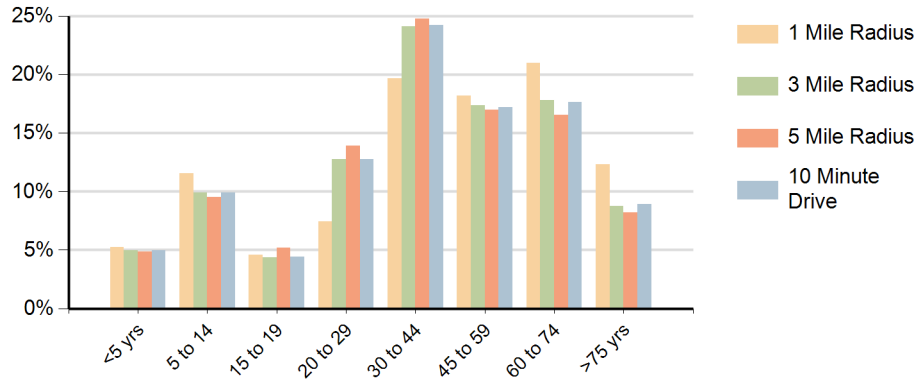
Daytime Population (10 Minute Drive)



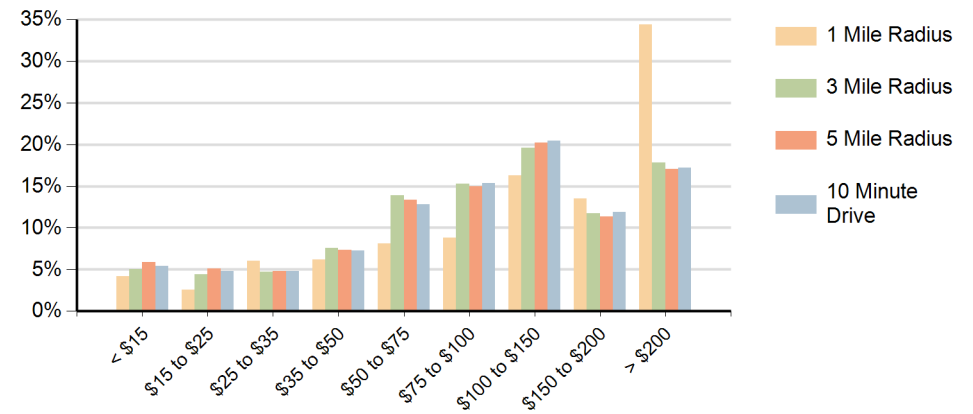
Race (10 Minute Drive)



Population by Age Range



Households by Income Range (\$000)



| Applewood Village Wheat Ridge, Colorado | | 1 Mile Radius | 3 Mile Radius | 5 Mile Radius | 10 Minute Drive |
|--|---------------------------------------|---------------|---------------|---------------|-----------------|
| Population | Current Estimated Population | 7,622 | 69,081 | 237,057 | 83,282 |
| | 2020 Census Population | 6,962 | 66,566 | 232,433 | 80,385 |
| | 2010 Census Population | 6,499 | 59,182 | 213,890 | 72,329 |
| | Historical Annual Growth 2010 to 2020 | 0.7% | 1.2% | 0.8% | 1.1% |
| | Estimated Annual Growth 2020 to 2024 | 2.2% | 0.9% | 0.5% | 0.8% |
| | Projected Annual Growth 2024 to 2029 | 0.0% | 0.5% | 0.3% | 0.5% |
| Households | Current Estimated Households | 3,159 | 29,698 | 101,518 | 35,890 |
| | 2020 Census Households | 2,933 | 28,695 | 99,707 | 34,739 |
| | 2010 Census Households | 2,908 | 25,903 | 91,951 | 31,640 |
| | Historical Annual Growth 2010 to 2020 | 0.1% | 1.0% | 0.8% | 0.9% |
| | Estimated Annual Growth 2020 to 2024 | 1.8% | 0.8% | 0.4% | 0.8% |
| | Projected Annual Growth 2024 to 2029 | -0.1% | 0.5% | 0.3% | 0.5% |
| | Population per Household | 2.4 | 2.3 | 2.3 | 2.3 |
| Race | White | 83.8% | 78.3% | 76.5% | 78.5% |
| | Black or African American | 0.8% | 1.6% | 1.8% | 1.5% |
| | American Indian | 0.7% | 1.2% | 1.3% | 1.2% |
| | Asian | 2.0% | 2.6% | 2.7% | 2.6% |
| | Pacific Islander | 0.1% | 0.2% | 0.1% | 0.1% |
| | 2 or More Races | 9.7% | 11.1% | 11.7% | 11.1% |
| | Other Races | 3.0% | 5.0% | 6.0% | 5.0% |
| | Hispanic Origin | 10.9% | 16.1% | 18.4% | 16.1% |