

Corbin's Corner
West Hartford, Connecticut

1 Mile Radius

3 Mile Radius

5 Mile Radius

10 Minute Drive

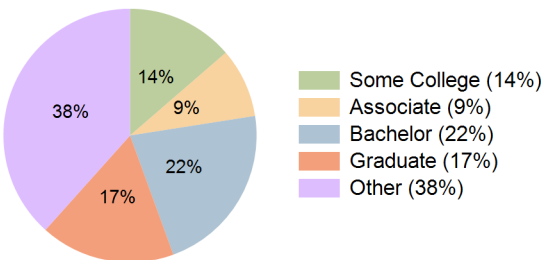
Current Year Demographics

Current Population	7,753	74,934	265,294	103,087
Total Daytime Pop	10,223	88,555	300,386	111,866
Daytime Workers	6,550	53,061	162,090	59,388
Average Household Income	\$148,516	\$137,636	\$110,219	\$111,953
Median Household Income	\$112,500	\$100,905	\$73,231	\$76,073
Total Households	3,055	30,666	108,276	42,116
Median Home Value	\$339,461	\$334,236	\$328,734	\$313,023
Bachelors Degree	29.3%	27.0%	20.5%	21.9%
Graduate Degree	23.3%	22.6%	17.5%	17.2%
Consumer Spending Index	130	121	98	99

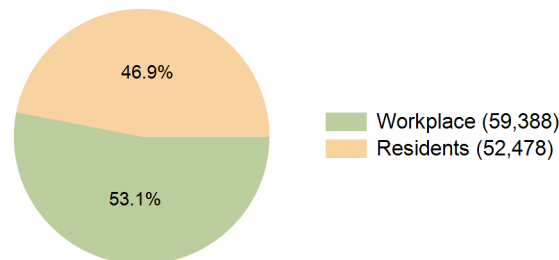
2029 Demographic Projections

Projected Population	7,756	74,978	262,981	102,997
Projected 5 Year Annual Growth Rate (Pop)	0.0%	0.0%	-0.2%	0.0%
Projected Households	3,115	31,379	109,784	43,001
Projected 5 Year Annual Growth Rate (HH)	0.4%	0.5%	0.3%	0.4%

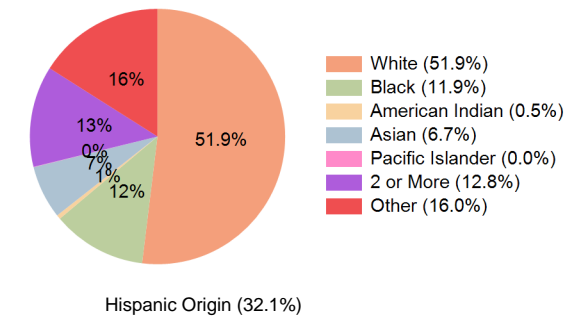
Education (10 Minute Drive)



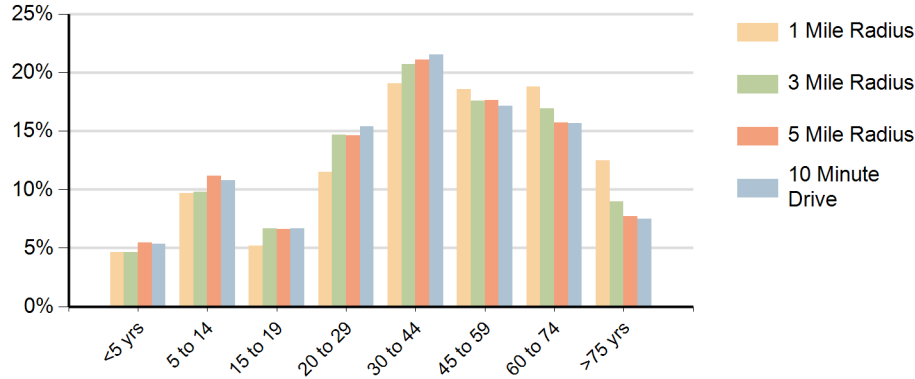
Daytime Population (10 Minute Drive)



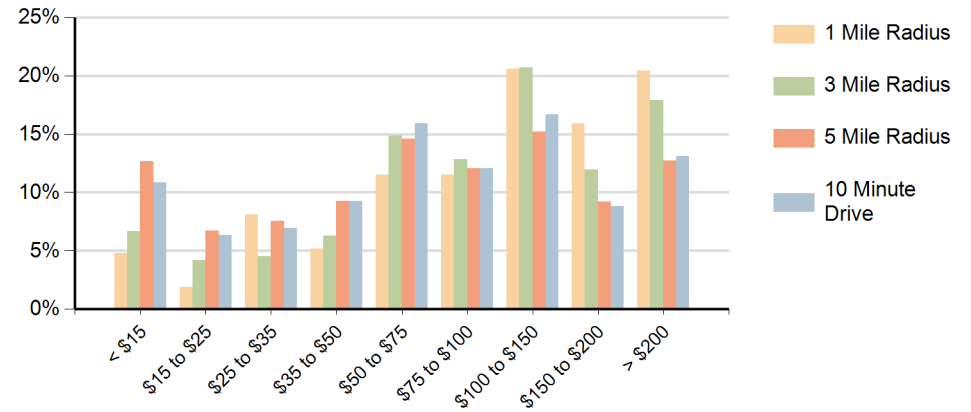
Race (10 Minute Drive)



Population by Age Range



Households by Income Range (\$000)



Corbin's Corner West Hartford, Connecticut		1 Mile Radius	3 Mile Radius	5 Mile Radius	10 Minute Drive
Population	Current Estimated Population	7,753	74,934	265,294	103,087
	2020 Census Population	7,656	74,299	265,928	102,804
	2010 Census Population	7,516	74,263	266,682	102,086
	Historical Annual Growth 2010 to 2020	0.2%	0.0%	0.0%	0.1%
	Estimated Annual Growth 2020 to 2024	0.3%	0.2%	-0.1%	0.1%
	Projected Annual Growth 2024 to 2029	0.0%	0.0%	-0.2%	0.0%
Households	Current Estimated Households	3,055	30,666	108,276	42,116
	2020 Census Households	2,999	30,314	107,484	41,677
	2010 Census Households	2,916	29,595	104,805	40,529
	Historical Annual Growth 2010 to 2020	0.3%	0.2%	0.3%	0.3%
	Estimated Annual Growth 2020 to 2024	0.4%	0.3%	0.2%	0.3%
	Projected Annual Growth 2024 to 2029	0.4%	0.5%	0.3%	0.4%
Population per Household		2.5	2.3	2.4	2.4
Race	White	64.5%	60.8%	48.6%	51.9%
	Black or African American	5.5%	9.4%	14.6%	11.9%
	American Indian	0.1%	0.4%	0.6%	0.5%
	Asian	17.4%	9.1%	6.0%	6.7%
	Pacific Islander	0.0%	0.0%	0.1%	0.0%
	2 or More Races	8.2%	10.2%	12.5%	12.8%
	Other Races	4.3%	10.1%	17.7%	16.0%
	Hispanic Origin	11.1%	20.3%	34.0%	32.1%