

Civic Center Plaza Niles, Illinois	1 Mile Radius	3 Mile Radius	5 Mile Radius	10 Minute Drive
---------------------------------------	---------------	---------------	---------------	-----------------

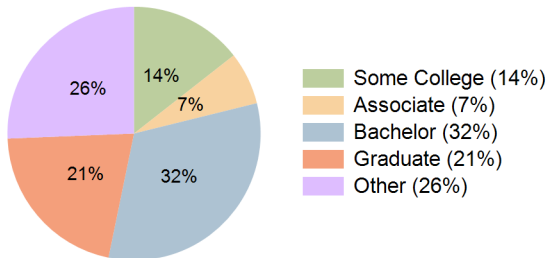
### Current Year Demographics

Current Population	15,589	164,454	456,249	161,770
Total Daytime Pop	21,324	169,610	488,799	166,789
Daytime Workers	13,549	88,147	263,113	86,612
Average Household Income	\$126,363	\$147,517	\$136,677	\$142,042
Median Household Income	\$92,964	\$105,659	\$97,245	\$102,910
Total Households	5,734	63,119	177,768	63,008
Median Home Value	\$353,637	\$402,975	\$383,709	\$395,318
Bachelors Degree	29.6%	32.7%	30.6%	32.1%
Graduate Degree	15.9%	21.3%	20.6%	21.1%
Consumer Spending Index	110	128	119	123

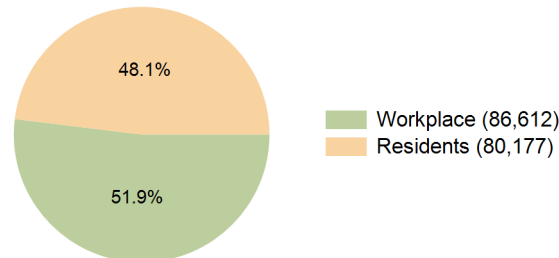
### 2029 Demographic Projections

Projected Population	15,122	159,374	443,915	156,879
Projected 5 Year Annual Growth Rate (Pop)	-0.6%	-0.6%	-0.6%	-0.6%
Projected Households	5,691	62,764	177,544	62,730
Projected 5 Year Annual Growth Rate (HH)	-0.2%	-0.1%	0.0%	-0.1%

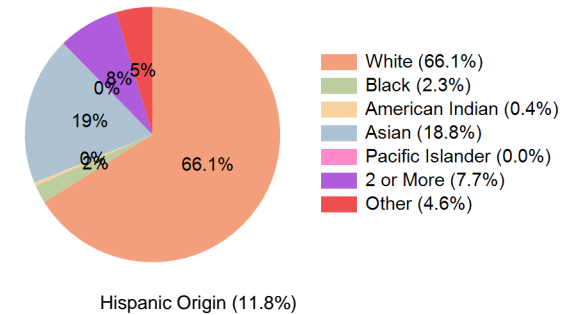
Education (10 Minute Drive)



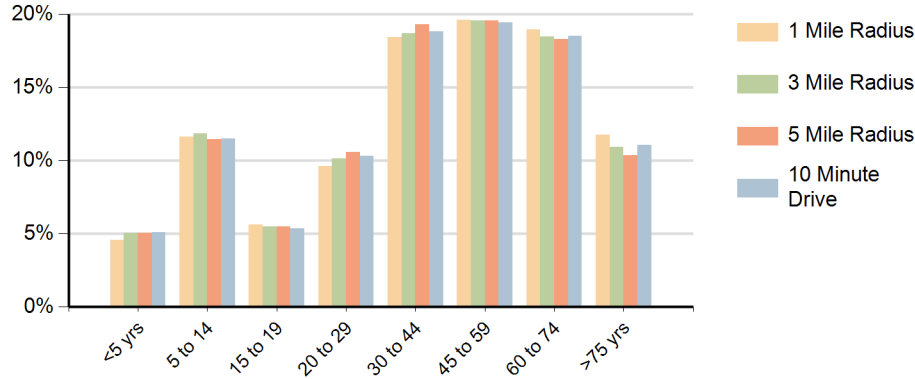
Daytime Population (10 Minute Drive)



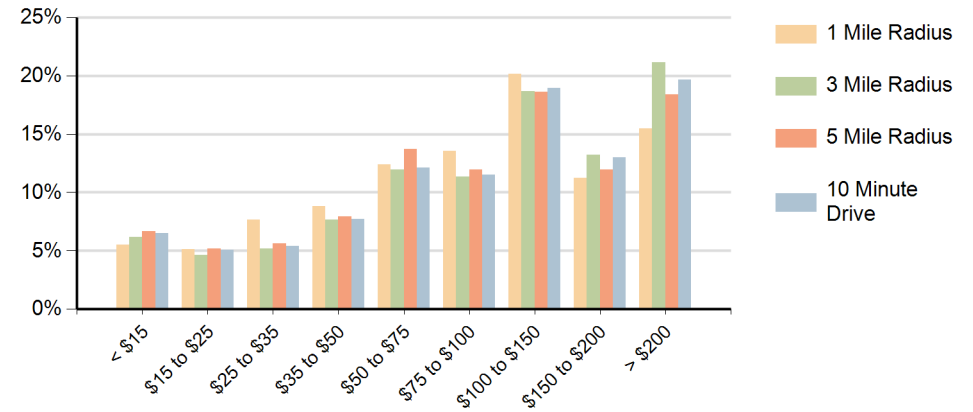
Race (10 Minute Drive)



## Population by Age Range



## Households by Income Range (\$000)



Civic Center Plaza Niles, Illinois		1 Mile Radius	3 Mile Radius	5 Mile Radius	10 Minute Drive
Population	Current Estimated Population	15,589	164,454	456,249	161,770
	2020 Census Population	15,996	170,227	471,558	167,430
	2010 Census Population	14,895	162,011	451,976	159,035
	Historical Annual Growth 2010 to 2020	0.7%	0.5%	0.4%	0.5%
	Estimated Annual Growth 2020 to 2024	-0.6%	-0.8%	-0.8%	-0.8%
	Projected Annual Growth 2024 to 2029	-0.6%	-0.6%	-0.6%	-0.6%
Households	Current Estimated Households	5,734	63,119	177,768	63,008
	2020 Census Households	5,774	63,710	179,236	63,510
	2010 Census Households	5,694	61,889	174,287	61,522
	Historical Annual Growth 2010 to 2020	0.1%	0.3%	0.3%	0.3%
	Estimated Annual Growth 2020 to 2024	-0.2%	-0.2%	-0.2%	-0.2%
	Projected Annual Growth 2024 to 2029	-0.2%	-0.1%	0.0%	-0.1%
Population per Household		2.7	2.6	2.5	2.5
Race	White	70.6%	67.6%	63.6%	66.1%
	Black or African American	1.4%	2.3%	2.9%	2.3%
	American Indian	0.3%	0.4%	0.6%	0.4%
	Asian	16.7%	17.7%	17.9%	18.8%
	Pacific Islander	0.0%	0.0%	0.0%	0.0%
	2 or More Races	7.1%	7.7%	8.7%	7.7%
	Other Races	3.9%	4.3%	6.4%	4.6%
	Hispanic Origin	10.9%	11.5%	15.1%	11.8%