

Roscoe Square  
Chicago, Illinois

1 Mile Radius

3 Mile Radius

5 Mile Radius

10 Minute Drive

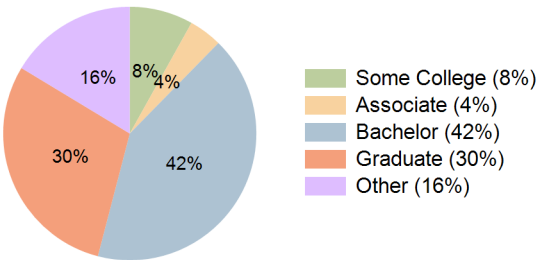
Current Year Demographics

|                          |           |           |           |           |
|--------------------------|-----------|-----------|-----------|-----------|
| Current Population       | 47,483    | 591,216   | 1,219,016 | 156,392   |
| Total Daytime Pop        | 39,345    | 454,771   | 1,264,306 | 126,739   |
| Daytime Workers          | 22,776    | 249,478   | 784,012   | 74,945    |
| Average Household Income | \$192,421 | \$147,742 | \$138,086 | \$182,524 |
| Median Household Income  | \$132,260 | \$100,284 | \$92,930  | \$123,370 |
| Total Households         | 20,705    | 282,754   | 569,985   | 70,517    |
| Median Home Value        | \$606,946 | \$491,853 | \$434,435 | \$603,372 |
| Bachelors Degree         | 41.7%     | 39.3%     | 34.7%     | 41.7%     |
| Graduate Degree          | 28.1%     | 26.7%     | 24.5%     | 29.6%     |
| Consumer Spending Index  | 166       | 129       | 122       | 158       |

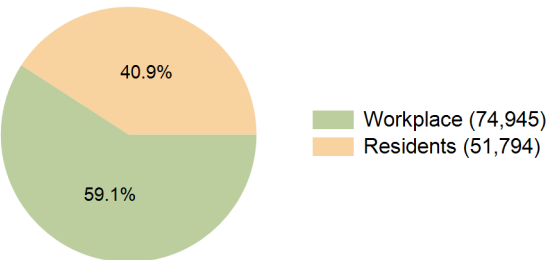
2029 Demographic Projections

|   |        |         |           |         |
|---|--------|---------|-----------|---------|
| Projected Population                      | 46,597 | 581,832 | 1,204,893 | 154,346 |
| Projected 5 Year Annual Growth Rate (Pop) | -0.4%  | -0.3%   | -0.2%     | -0.3%   |
| Projected Households                      | 20,911 | 286,933 | 582,466   | 71,609  |
| Projected 5 Year Annual Growth Rate (HH)  | 0.2%   | 0.3%    | 0.4%      | 0.3%    |

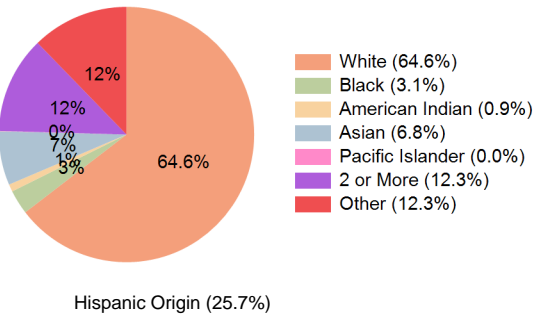
Education (10 Minute Drive)



Daytime Population (10 Minute Drive)

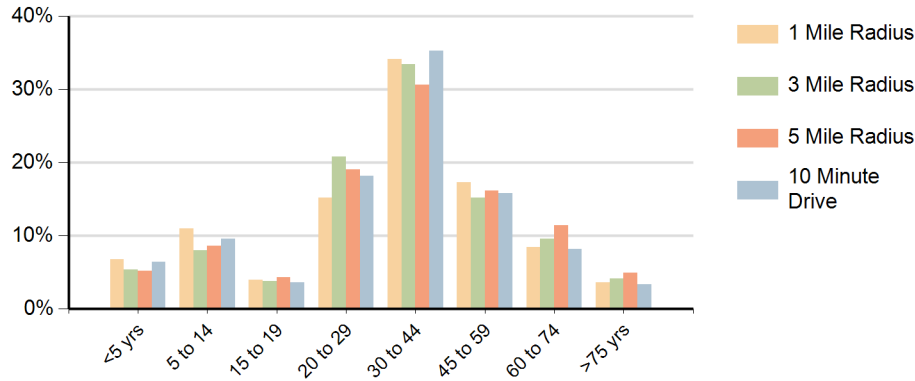


Race (10 Minute Drive)

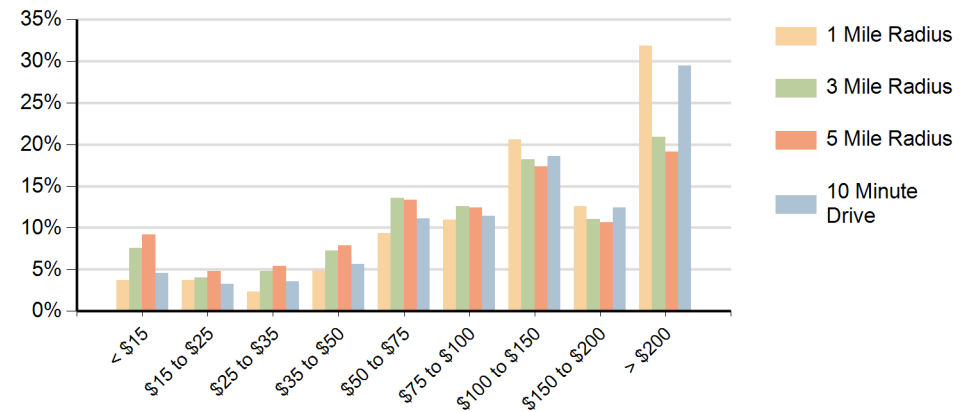


Hispanic Origin (25.7%)

### Population by Age Range



### Households by Income Range (\$000)



| Roscoe Square<br>Chicago, Illinois |                                       | 1 Mile Radius | 3 Mile Radius | 5 Mile Radius | 10 Minute Drive |
|------------------------------------|---------------------------------------|---------------|---------------|---------------|-----------------|
| Population                         | Current Estimated Population          | 47,483        | 591,216       | 1,219,016     | 156,392         |
|                                    | 2020 Census Population                | 48,803        | 603,663       | 1,242,938     | 159,048         |
|                                    | 2010 Census Population                | 46,406        | 593,353       | 1,194,052     | 152,281         |
|                                    | Historical Annual Growth 2010 to 2020 | 0.5%          | 0.2%          | 0.4%          | 0.4%            |
|                                    | Estimated Annual Growth 2020 to 2024  | -0.6%         | -0.5%         | -0.5%         | -0.4%           |
|                                    | Projected Annual Growth 2024 to 2029  | -0.4%         | -0.3%         | -0.2%         | -0.3%           |
| Households                         | Current Estimated Households          | 20,705        | 282,754       | 569,985       | 70,517          |
|                                    | 2020 Census Households                | 20,790        | 280,702       | 563,290       | 70,126          |
|                                    | 2010 Census Households                | 19,884        | 262,510       | 511,535       | 66,795          |
|                                    | Historical Annual Growth 2010 to 2020 | 0.5%          | 0.7%          | 1.0%          | 0.5%            |
|                                    | Estimated Annual Growth 2020 to 2024  | -0.1%         | 0.2%          | 0.3%          | 0.1%            |
|                                    | Projected Annual Growth 2024 to 2029  | 0.2%          | 0.3%          | 0.4%          | 0.3%            |
| Race                               | Population per Household              | 2.3           | 2.1           | 2.1           | 2.2             |
|                                    | White                                 | 65.0%         | 57.3%         | 50.3%         | 64.6%           |
|                                    | Black or African American             | 2.9%          | 6.1%          | 12.3%         | 3.1%            |
|                                    | American Indian                       | 0.9%          | 1.2%          | 1.1%          | 0.9%            |
|                                    | Asian                                 | 7.1%          | 8.1%          | 9.5%          | 6.8%            |
|                                    | Pacific Islander                      | 0.0%          | 0.0%          | 0.0%          | 0.0%            |
|                                    | 2 or More Races                       | 12.7%         | 12.2%         | 11.5%         | 12.3%           |
|                                    | Other Races                           | 11.4%         | 15.1%         | 15.3%         | 12.3%           |
| Hispanic Origin                    |                                       | 24.8%         | 29.4%         | 29.1%         | 25.7%           |