

Festival at Woodholme
Baltimore, Maryland

1 Mile Radius

3 Mile Radius

5 Mile Radius

10 Minute Drive

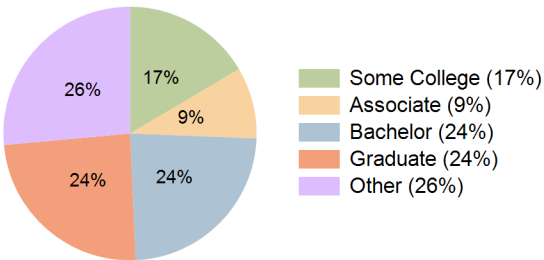
Current Year Demographics

Current Population	8,037	90,179	247,203	98,933
Total Daytime Pop	11,931	91,018	239,937	104,321
Daytime Workers	7,571	46,220	118,508	55,992
Average Household Income	\$127,940	\$118,135	\$111,980	\$122,733
Median Household Income	\$90,339	\$86,701	\$82,074	\$90,891
Total Households	3,797	36,974	99,517	39,767
Median Home Value	\$438,388	\$371,553	\$361,141	\$380,214
Bachelors Degree	31.3%	23.0%	21.8%	23.7%
Graduate Degree	29.4%	23.4%	21.7%	24.3%
Consumer Spending Index	109	102	97	105

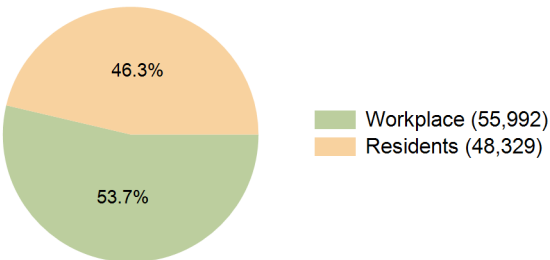
2030 Demographic Projections

Projected Population	8,025	90,550	247,102	99,536
Projected 5 Year Annual Growth Rate (Pop)	0.0%	0.1%	0.0%	0.1%
Projected Households	3,803	37,380	100,181	40,242
Projected 5 Year Annual Growth Rate (HH)	0.0%	0.2%	0.1%	0.2%

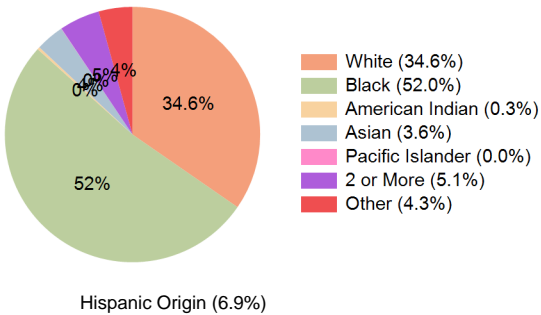
Education (10 Minute Drive)



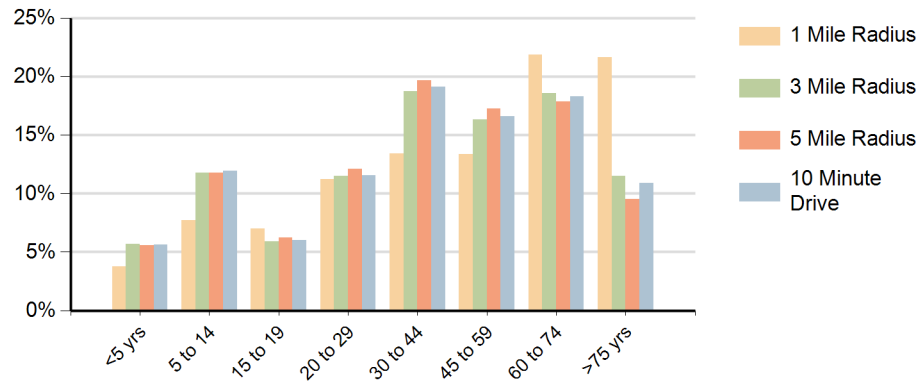
Daytime Population (10 Minute Drive)



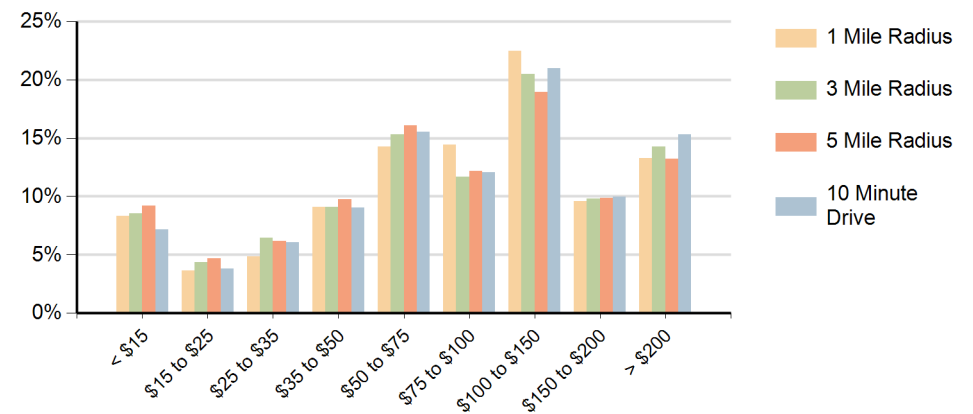
Race (10 Minute Drive)



Population by Age Range



Households by Income Range (\$000)



Festival at Woodholme Baltimore, Maryland		1 Mile Radius	3 Mile Radius	5 Mile Radius	10 Minute Drive
Population	Current Estimated Population	8,037	90,179	247,203	98,933
	2020 Census Population	8,196	90,950	249,613	99,607
	2010 Census Population	7,951	85,578	241,706	93,011
	Historical Annual Growth 2010 to 2020	0.3%	0.6%	0.3%	0.7%
	Estimated Annual Growth 2020 to 2025	-0.4%	-0.2%	-0.2%	-0.1%
	Projected Annual Growth 2025 to 2030	0.0%	0.1%	0.0%	0.1%
Households	Current Estimated Households	3,797	36,974	99,517	39,767
	2020 Census Households	3,806	36,832	99,171	39,607
	2010 Census Households	3,923	35,634	96,720	38,106
	Historical Annual Growth 2010 to 2020	-0.3%	0.3%	0.3%	0.4%
	Estimated Annual Growth 2020 to 2025	-0.1%	0.1%	0.1%	0.1%
	Projected Annual Growth 2025 to 2030	0.0%	0.2%	0.1%	0.2%
Race	Population per Household	1.9	2.4	2.4	2.5
	White	60.4%	34.6%	26.8%	34.6%
	Black or African American	30.7%	52.7%	60.5%	52.0%
	American Indian	0.1%	0.3%	0.4%	0.3%
	Asian	3.6%	3.1%	3.5%	3.6%
	Pacific Islander	0.0%	0.0%	0.0%	0.0%
	2 or More Races	4.0%	4.9%	5.0%	5.1%
	Other Races	1.2%	4.3%	3.7%	4.3%
Hispanic Origin		3.6%	6.8%	6.3%	6.9%