

Parkville Shopping Center
Baltimore, Maryland

1 Mile Radius

3 Mile Radius

5 Mile Radius

10 Minute Drive

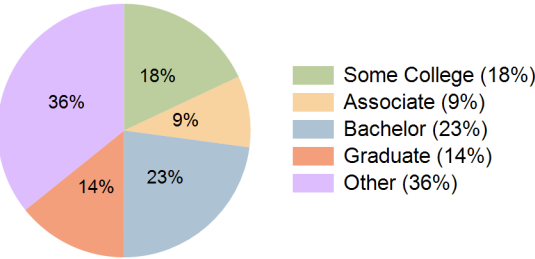
Current Year Demographics

Current Population	18,806	161,360	374,451	120,939
Total Daytime Pop	13,238	124,499	337,969	92,789
Daytime Workers	4,936	49,023	154,645	35,933
Average Household Income	\$111,644	\$101,685	\$107,526	\$99,824
Median Household Income	\$88,231	\$76,932	\$76,250	\$76,213
Total Households	7,741	67,196	150,224	50,939
Median Home Value	\$267,264	\$269,407	\$294,094	\$268,324
Bachelors Degree	22.4%	23.4%	22.6%	22.9%
Graduate Degree	15.4%	14.8%	18.4%	14.2%
Consumer Spending Index	99	91	95	89

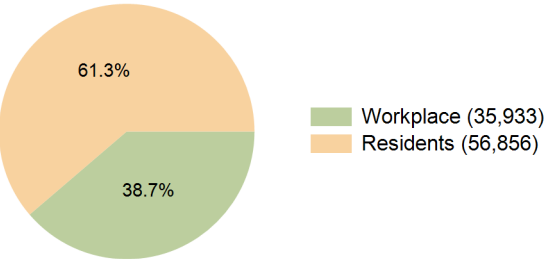
2029 Demographic Projections

Projected Population	18,394	158,554	369,500	118,741
Projected 5 Year Annual Growth Rate (Pop)	-0.4%	-0.4%	-0.3%	-0.4%
Projected Households	7,710	67,097	150,734	50,787
Projected 5 Year Annual Growth Rate (HH)	-0.1%	0.0%	0.1%	-0.1%

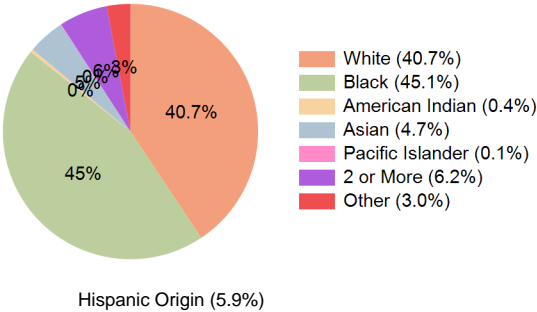
Education (10 Minute Drive)



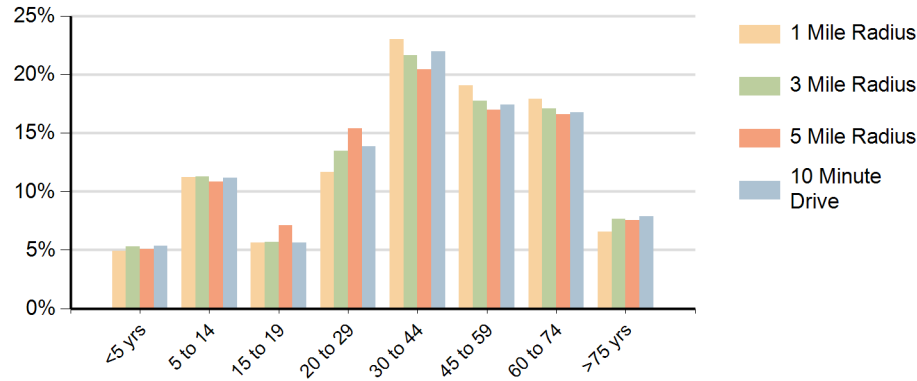
Daytime Population (10 Minute Drive)



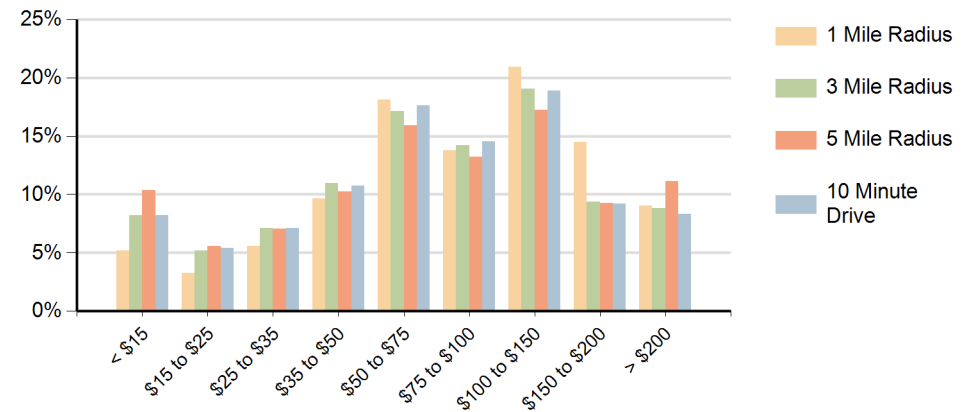
Race (10 Minute Drive)



Population by Age Range



Households by Income Range (\$000)



Parkville Shopping Center Baltimore, Maryland		1 Mile Radius	3 Mile Radius	5 Mile Radius	10 Minute Drive
Population	Current Estimated Population	18,806	161,360	374,451	120,939
	2020 Census Population	19,346	165,440	381,014	124,353
	2010 Census Population	19,502	167,379	385,387	125,384
	Historical Annual Growth 2010 to 2020	-0.1%	-0.1%	-0.1%	-0.1%
	Estimated Annual Growth 2020 to 2024	-0.7%	-0.6%	-0.4%	-0.7%
	Projected Annual Growth 2024 to 2029	-0.4%	-0.4%	-0.3%	-0.4%
Households	Current Estimated Households	7,741	67,196	150,224	50,939
	2020 Census Households	7,831	67,825	151,058	51,459
	2010 Census Households	7,895	68,967	151,796	52,709
	Historical Annual Growth 2010 to 2020	-0.1%	-0.2%	-0.1%	-0.2%
	Estimated Annual Growth 2020 to 2024	-0.3%	-0.2%	-0.1%	-0.2%
	Projected Annual Growth 2024 to 2029	-0.1%	0.0%	0.1%	-0.1%
Race	Population per Household	2.4	2.4	2.4	2.3
	White	55.1%	37.8%	39.6%	40.7%
	Black or African American	30.9%	48.5%	44.7%	45.1%
	American Indian	0.4%	0.4%	0.4%	0.4%
	Asian	2.8%	4.5%	6.3%	4.7%
	Pacific Islander	0.0%	0.1%	0.0%	0.1%
	2 or More Races	7.1%	5.9%	6.0%	6.2%
	Other Races	3.6%	2.8%	3.0%	3.0%
Hispanic Origin		6.5%	5.5%	6.0%	5.9%