

Plaza Square Wayne, New Jersey	1 Mile Radius	3 Mile Radius	5 Mile Radius	10 Minute Drive
-----------------------------------	---------------	---------------	---------------	-----------------

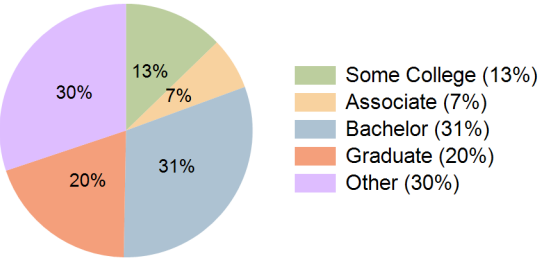
Current Year Demographics

Current Population	8,038	94,980	331,840	62,475
Total Daytime Pop	10,615	85,834	326,505	64,472
Daytime Workers	6,868	37,861	154,678	34,070
Average Household Income	\$153,989	\$166,120	\$138,357	\$178,059
Median Household Income	\$106,207	\$111,958	\$90,945	\$122,169
Total Households	3,447	31,893	113,678	21,372
Median Home Value	\$576,741	\$589,073	\$565,041	\$589,773
Bachelors Degree	34.7%	27.5%	23.9%	30.9%
Graduate Degree	27.6%	17.4%	13.6%	19.6%
Consumer Spending Index	134	144	121	154

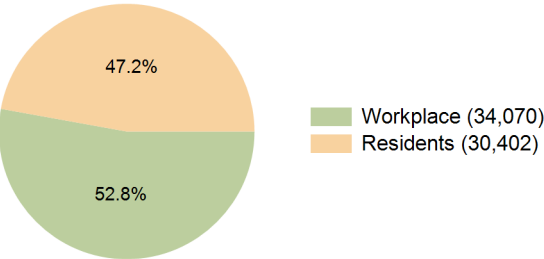
2029 Demographic Projections

Projected Population	7,742	92,881	327,388	60,396
Projected 5 Year Annual Growth Rate (Pop)	-0.8%	-0.5%	-0.3%	-0.7%
Projected Households	3,398	31,858	114,667	21,117
Projected 5 Year Annual Growth Rate (HH)	-0.3%	0.0%	0.2%	-0.2%

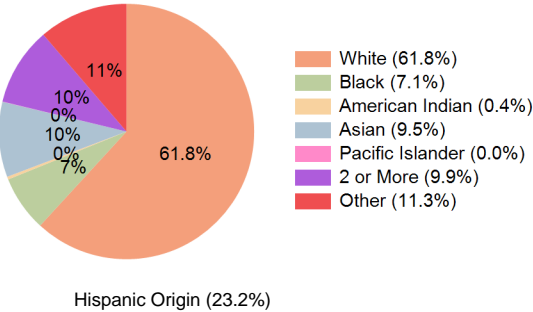
Education (10 Minute Drive)



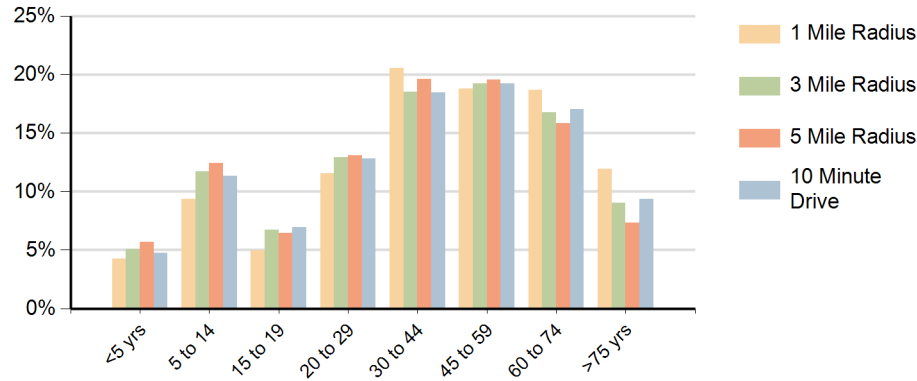
Daytime Population (10 Minute Drive)



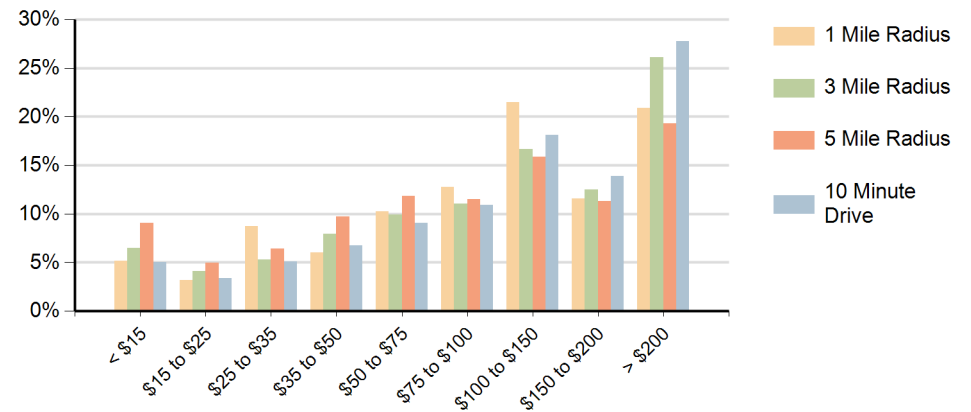
Race (10 Minute Drive)



Population by Age Range



Households by Income Range (\$000)



Plaza Square Wayne, New Jersey		1 Mile Radius	3 Mile Radius	5 Mile Radius	10 Minute Drive
Population	Current Estimated Population	8,038	94,980	331,840	62,475
	2020 Census Population	8,225	95,341	333,484	63,900
	2010 Census Population	8,110	90,854	316,158	61,952
	Historical Annual Growth 2010 to 2020	0.1%	0.5%	0.5%	0.3%
	Estimated Annual Growth 2020 to 2024	-0.5%	-0.1%	-0.1%	-0.5%
	Projected Annual Growth 2024 to 2029	-0.8%	-0.5%	-0.3%	-0.7%
Households	Current Estimated Households	3,447	31,893	113,678	21,372
	2020 Census Households	3,487	31,616	112,670	21,580
	2010 Census Households	3,413	30,667	106,106	20,985
	Historical Annual Growth 2010 to 2020	0.2%	0.3%	0.6%	0.3%
	Estimated Annual Growth 2020 to 2024	-0.3%	0.2%	0.2%	-0.2%
	Projected Annual Growth 2024 to 2029	-0.3%	0.0%	0.2%	-0.2%
Race	Population per Household	2.3	2.9	2.9	2.8
	White	68.4%	55.1%	46.0%	61.8%
	Black or African American	3.3%	8.7%	12.3%	7.1%
	American Indian	0.2%	0.5%	0.9%	0.4%
	Asian	16.5%	10.2%	6.8%	9.5%
	Pacific Islander	0.0%	0.0%	0.0%	0.0%
	2 or More Races	7.4%	10.7%	11.7%	9.9%
	Other Races	4.2%	14.9%	22.2%	11.3%
Hispanic Origin		11.9%	28.5%	37.9%	23.2%