

Greenway Town Center
Tigard, Oregon

1 Mile Radius

3 Mile Radius

5 Mile Radius

10 Minute Drive

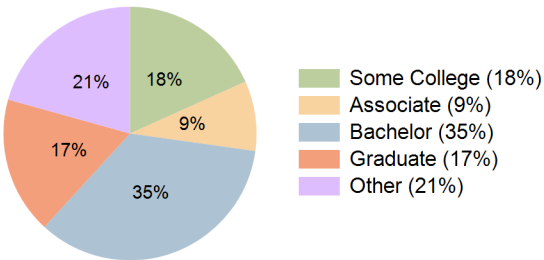
Current Year Demographics

Current Population	18,335	149,085	313,729	104,037
Total Daytime Pop	18,072	147,147	345,970	105,959
Daytime Workers	10,118	80,233	203,665	61,050
Average Household Income	\$121,503	\$136,250	\$141,550	\$136,986
Median Household Income	\$96,999	\$100,473	\$101,521	\$102,791
Total Households	7,615	60,044	126,748	41,245
Median Home Value	\$603,450	\$628,196	\$644,656	\$626,646
Bachelors Degree	35.0%	34.0%	32.8%	34.6%
Graduate Degree	13.8%	17.9%	19.5%	17.5%
Consumer Spending Index	107	119	123	120

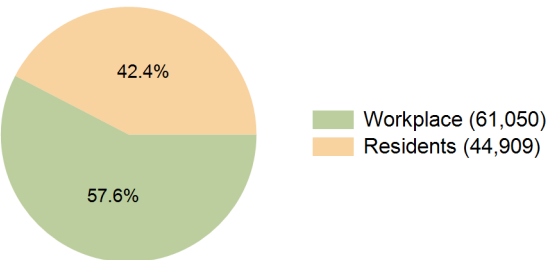
2029 Demographic Projections

Projected Population	18,550	152,443	320,681	106,364
Projected 5 Year Annual Growth Rate (Pop)	0.2%	0.5%	0.4%	0.4%
Projected Households	7,785	61,920	130,436	42,525
Projected 5 Year Annual Growth Rate (HH)	0.4%	0.6%	0.6%	0.6%

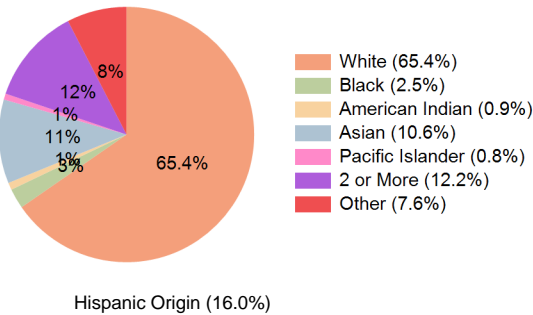
Education (10 Minute Drive)



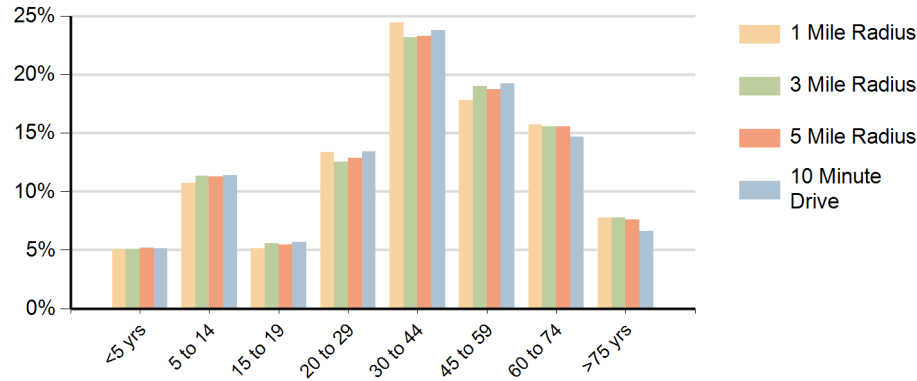
Daytime Population (10 Minute Drive)



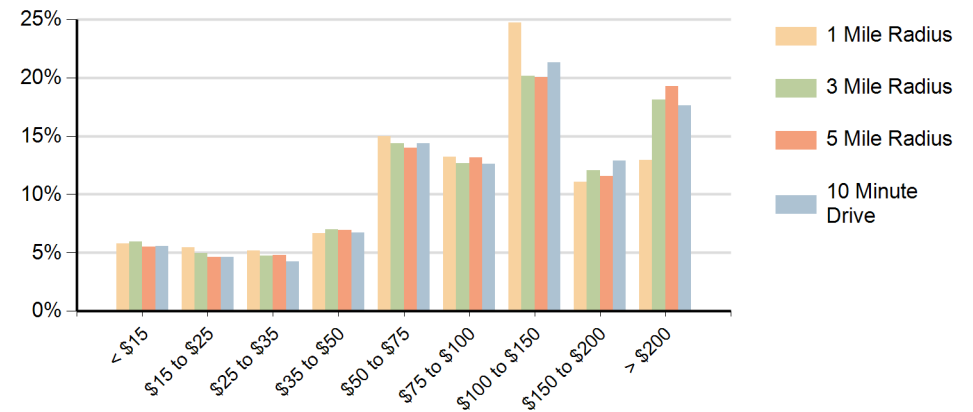
Race (10 Minute Drive)



Population by Age Range



Households by Income Range (\$000)



Greenway Town Center Tigard, Oregon		1 Mile Radius	3 Mile Radius	5 Mile Radius	10 Minute Drive
Population	Current Estimated Population	18,335	149,085	313,729	104,037
	2020 Census Population	18,412	145,444	307,032	102,369
	2010 Census Population	17,326	133,979	281,171	95,137
	Historical Annual Growth 2010 to 2020	0.6%	0.8%	0.9%	0.7%
	Estimated Annual Growth 2020 to 2024	-0.1%	0.6%	0.5%	0.4%
	Projected Annual Growth 2024 to 2029	0.2%	0.5%	0.4%	0.4%
Households	Current Estimated Households	7,615	60,044	126,748	41,245
	2020 Census Households	7,554	58,211	123,519	40,339
	2010 Census Households	7,100	54,235	115,053	37,741
	Historical Annual Growth 2010 to 2020	0.6%	0.7%	0.7%	0.7%
	Estimated Annual Growth 2020 to 2024	0.2%	0.7%	0.6%	0.5%
	Projected Annual Growth 2024 to 2029	0.4%	0.6%	0.6%	0.6%
Race	Population per Household	2.4	2.5	2.5	2.5
	White	68.4%	66.6%	66.7%	65.4%
	Black or African American	2.2%	2.5%	2.7%	2.5%
	American Indian	0.9%	0.9%	0.9%	0.9%
	Asian	9.1%	10.2%	9.2%	10.6%
	Pacific Islander	0.9%	0.8%	0.7%	0.8%
	2 or More Races	11.5%	12.0%	12.3%	12.2%
	Other Races	7.0%	7.1%	7.6%	7.6%
Hispanic Origin		14.5%	15.2%	16.2%	16.0%