

Stefko Blvd Shopping Center Bethlehem, Pennsylvania	1 Mile Radius	3 Mile Radius	5 Mile Radius	10 Minute Drive
--	---------------	---------------	---------------	-----------------

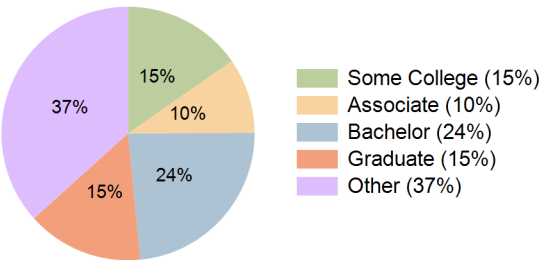
Current Year Demographics

Current Population	16,309	90,546	161,939	85,309
Total Daytime Pop	12,819	98,801	189,095	89,443
Daytime Workers	4,607	51,984	106,214	46,124
Average Household Income	\$91,849	\$101,683	\$105,391	\$103,987
Median Household Income	\$65,988	\$70,152	\$74,470	\$72,223
Total Households	6,618	35,277	63,270	33,359
Median Home Value	\$255,068	\$312,155	\$331,352	\$318,052
Bachelors Degree	15.8%	23.3%	22.4%	23.6%
Graduate Degree	10.0%	14.9%	15.6%	14.9%
Consumer Spending Index	82	90	93	92

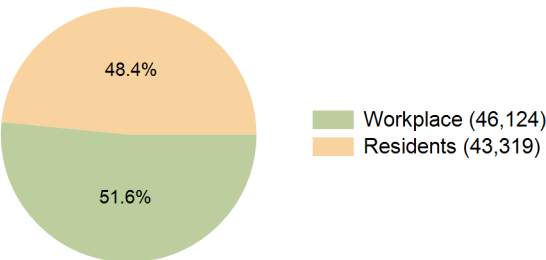
2029 Demographic Projections

Projected Population	16,246	91,397	162,743	86,264
Projected 5 Year Annual Growth Rate (Pop)	-0.1%	0.2%	0.1%	0.2%
Projected Households	6,657	36,073	64,269	34,171
Projected 5 Year Annual Growth Rate (HH)	0.1%	0.5%	0.3%	0.5%

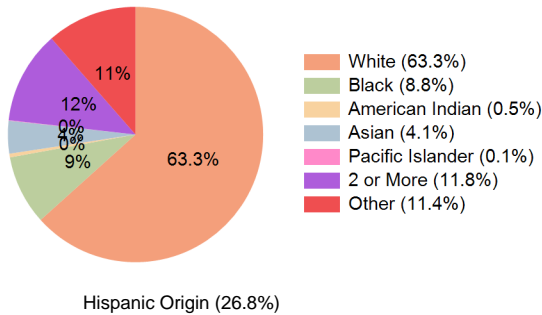
Education (10 Minute Drive)



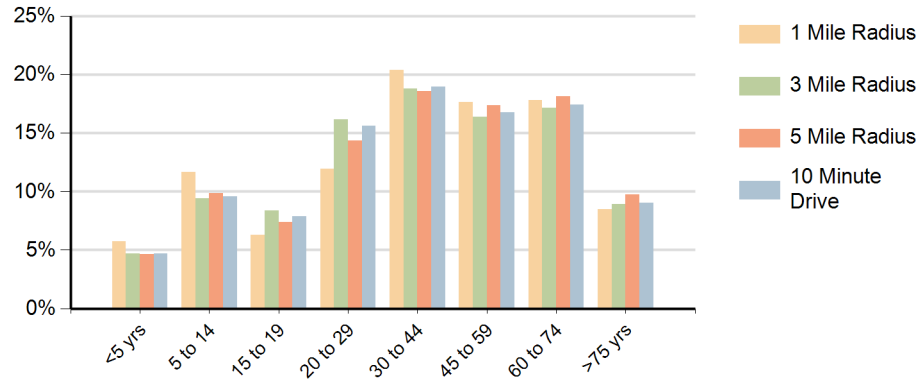
Daytime Population (10 Minute Drive)



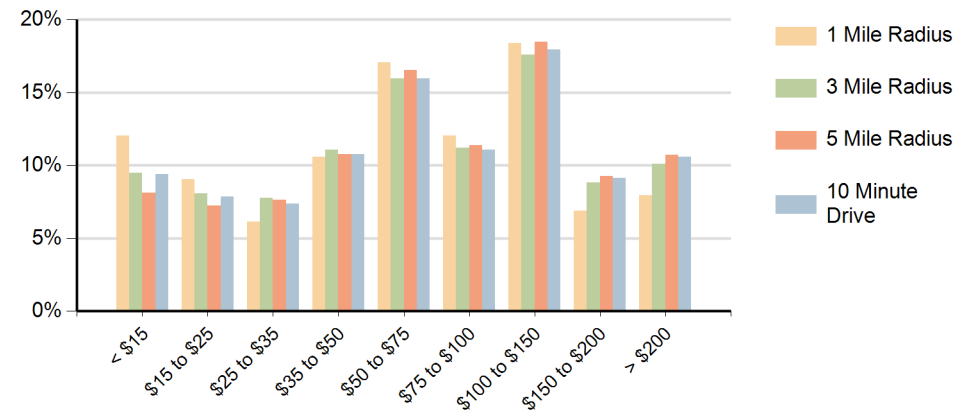
Race (10 Minute Drive)



Population by Age Range



Households by Income Range (\$000)



Stefko Blvd Shopping Center Bethlehem, Pennsylvania		1 Mile Radius	3 Mile Radius	5 Mile Radius	10 Minute Drive
Population	Current Estimated Population	16,309	90,546	161,939	85,309
	2020 Census Population	16,212	87,333	157,418	81,827
	2010 Census Population	15,577	84,707	151,510	78,992
	Historical Annual Growth 2010 to 2020	0.4%	0.3%	0.4%	0.4%
	Estimated Annual Growth 2020 to 2024	0.1%	0.9%	0.7%	1.0%
	Projected Annual Growth 2024 to 2029	-0.1%	0.2%	0.1%	0.2%
Households	Current Estimated Households	6,618	35,277	63,270	33,359
	2020 Census Households	6,535	34,539	62,022	32,439
	2010 Census Households	6,364	32,524	59,017	30,680
	Historical Annual Growth 2010 to 2020	0.3%	0.6%	0.5%	0.6%
	Estimated Annual Growth 2020 to 2024	0.3%	0.5%	0.5%	0.7%
	Projected Annual Growth 2024 to 2029	0.1%	0.5%	0.3%	0.5%
Race	Population per Household	2.5	2.4	2.4	2.4
	White	59.1%	63.0%	66.2%	63.3%
	Black or African American	9.9%	8.7%	7.7%	8.8%
	American Indian	0.5%	0.5%	0.4%	0.5%
	Asian	2.0%	4.3%	4.2%	4.1%
	Pacific Islander	0.1%	0.1%	0.1%	0.1%
	2 or More Races	15.1%	11.8%	11.0%	11.8%
	Other Races	13.3%	11.7%	10.5%	11.4%
Hispanic Origin		35.1%	27.1%	24.2%	26.8%