

Mercer Square Doylestown, Pennsylvania	1 Mile Radius	3 Mile Radius	5 Mile Radius	10 Minute Drive
---	---------------	---------------	---------------	-----------------

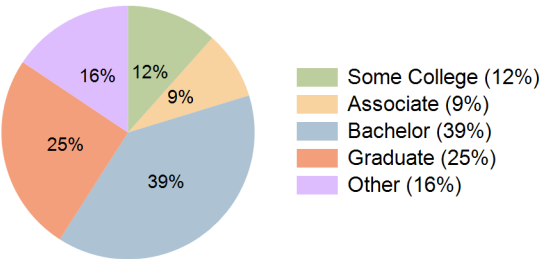
Current Year Demographics

Current Population	8,266	37,899	80,931	44,219
Total Daytime Pop	14,710	45,789	80,296	51,746
Daytime Workers	10,676	27,759	43,373	30,961
Average Household Income	\$134,841	\$181,394	\$191,927	\$184,929
Median Household Income	\$98,901	\$132,976	\$150,689	\$137,530
Total Households	3,960	14,859	29,537	17,127
Median Home Value	\$615,057	\$649,543	\$644,871	\$644,467
Bachelors Degree	35.0%	38.7%	36.9%	38.8%
Graduate Degree	23.1%	25.4%	25.5%	25.3%
Consumer Spending Index	114	152	160	155

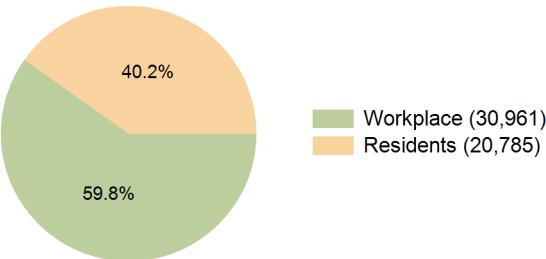
2030 Demographic Projections

Projected Population	8,696	38,318	81,424	44,623
Projected 5 Year Annual Growth Rate (Pop)	1.0%	0.2%	0.1%	0.2%
Projected Households	4,225	15,183	30,001	17,459
Projected 5 Year Annual Growth Rate (HH)	1.3%	0.4%	0.3%	0.4%

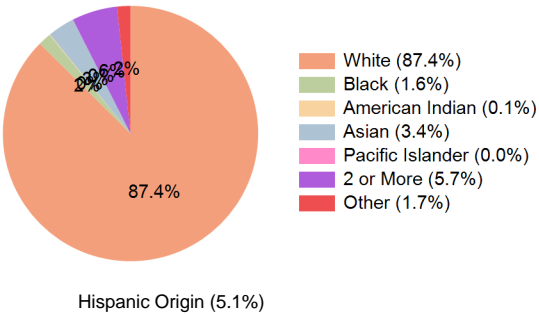
Education (10 Minute Drive)



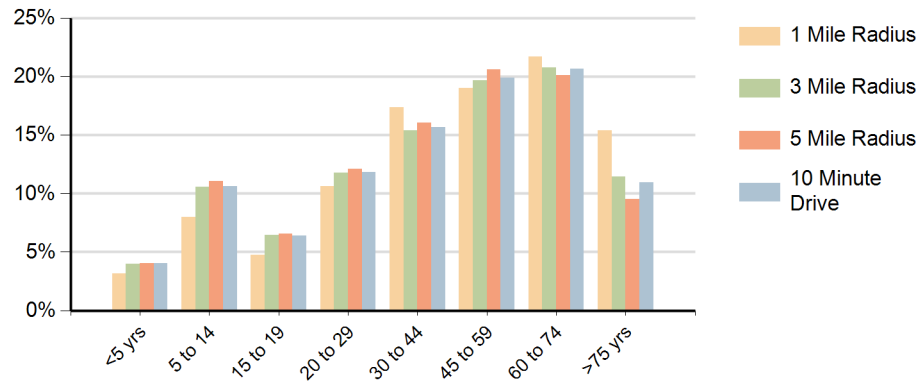
Daytime Population (10 Minute Drive)



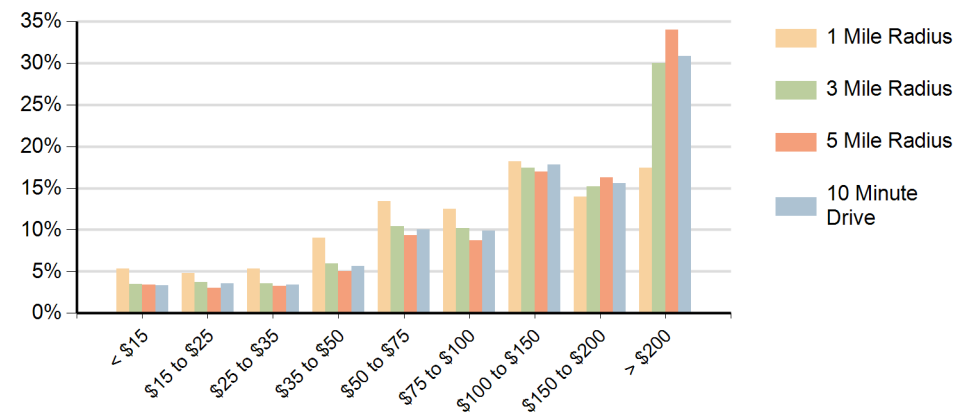
Race (10 Minute Drive)



Population by Age Range



Households by Income Range (\$000)



Mercer Square Doylestown, Pennsylvania		1 Mile Radius	3 Mile Radius	5 Mile Radius	10 Minute Drive
Population	Current Estimated Population	8,266	37,899	80,931	44,219
	2020 Census Population	8,144	37,213	79,956	43,635
	2010 Census Population	7,842	35,708	76,940	41,865
	Historical Annual Growth 2010 to 2020	0.4%	0.4%	0.4%	0.4%
	Estimated Annual Growth 2020 to 2025	0.3%	0.4%	0.2%	0.3%
	Projected Annual Growth 2025 to 2030	1.0%	0.2%	0.1%	0.2%
Households	Current Estimated Households	3,960	14,859	29,537	17,127
	2020 Census Households	3,881	14,452	28,823	16,701
	2010 Census Households	3,679	13,658	27,127	15,797
	Historical Annual Growth 2010 to 2020	0.5%	0.6%	0.6%	0.6%
	Estimated Annual Growth 2020 to 2025	0.4%	0.5%	0.5%	0.5%
	Projected Annual Growth 2025 to 2030	1.3%	0.4%	0.3%	0.4%
Race	Population per Household	2.0	2.5	2.6	2.5
	White	87.4%	87.6%	86.2%	87.4%
	Black or African American	1.5%	1.7%	1.7%	1.6%
	American Indian	0.1%	0.1%	0.1%	0.1%
	Asian	3.3%	3.2%	4.8%	3.4%
	Pacific Islander	0.0%	0.0%	0.0%	0.0%
	2 or More Races	6.3%	5.8%	5.6%	5.7%
	Other Races	1.3%	1.6%	1.6%	1.7%
Hispanic Origin		4.8%	5.0%	4.8%	5.1%