

Hanover Village Mechanicsville, Virginia	1 Mile Radius	3 Mile Radius	5 Mile Radius	10 Minute Drive
---	---------------	---------------	---------------	-----------------

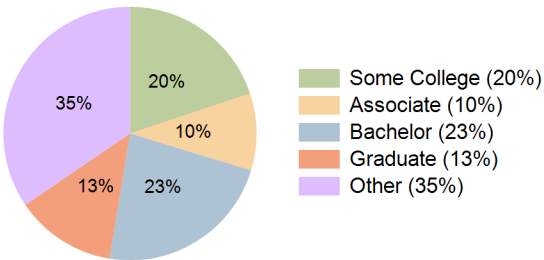
Current Year Demographics

Current Population	5,709	35,439	88,092	40,913
Total Daytime Pop	6,503	30,830	68,117	34,739
Daytime Workers	4,287	15,474	29,942	17,298
Average Household Income	\$95,726	\$113,624	\$102,562	\$111,468
Median Household Income	\$79,574	\$95,942	\$80,883	\$91,572
Total Households	2,306	14,105	35,245	16,313
Median Home Value	\$283,621	\$332,765	\$329,829	\$327,732
Bachelors Degree	19.5%	23.9%	21.0%	22.9%
Graduate Degree	10.2%	13.4%	11.6%	12.9%
Consumer Spending Index	85	100	91	98

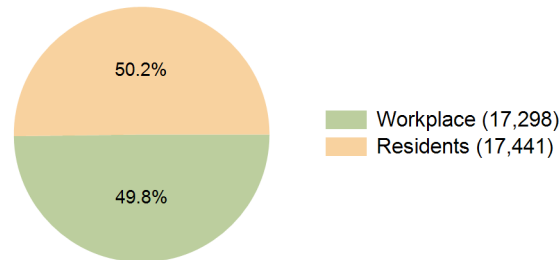
2029 Demographic Projections

Projected Population	6,035	36,603	89,960	42,474
Projected 5 Year Annual Growth Rate (Pop)	1.1%	0.7%	0.4%	0.8%
Projected Households	2,473	14,756	36,330	17,142
Projected 5 Year Annual Growth Rate (HH)	1.4%	0.9%	0.6%	1.0%

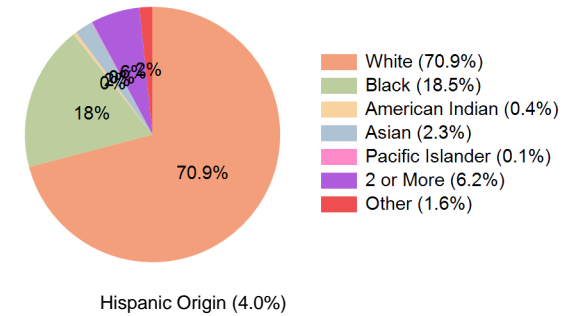
Education (10 Minute Drive)



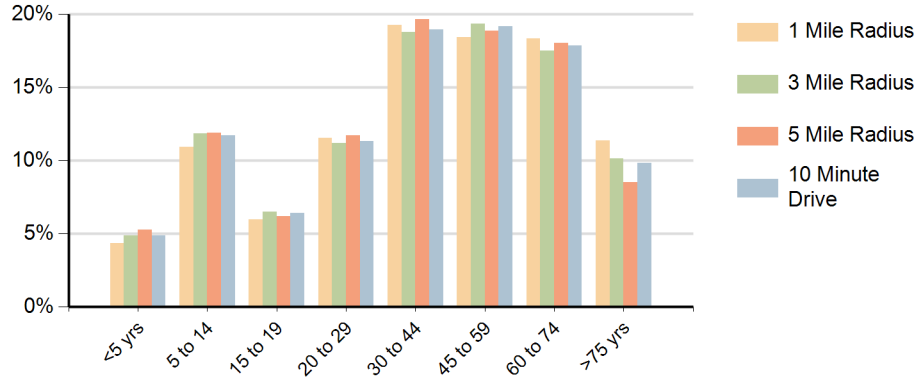
Daytime Population (10 Minute Drive)



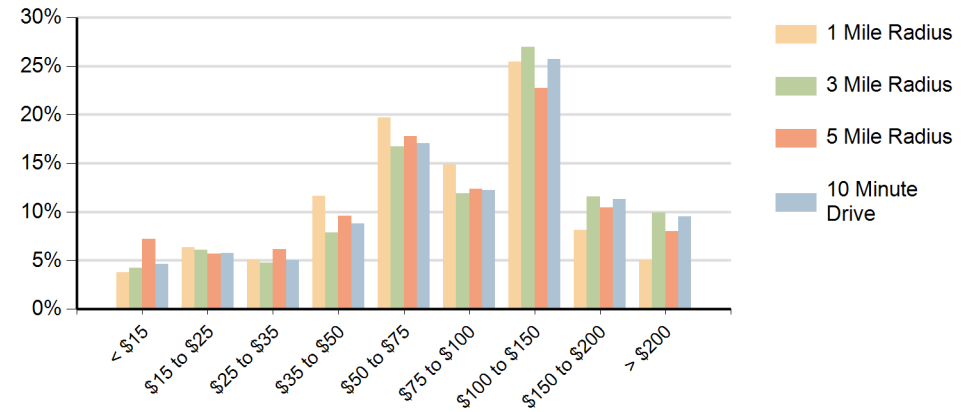
Race (10 Minute Drive)



Population by Age Range



Households by Income Range (\$000)



Hanover Village Mechanicsville, Virginia		1 Mile Radius	3 Mile Radius	5 Mile Radius	10 Minute Drive
Population	Current Estimated Population	5,709	35,439	88,092	40,913
	2020 Census Population	5,100	34,234	86,031	39,644
	2010 Census Population	4,759	31,866	79,901	37,043
	Historical Annual Growth 2010 to 2020	0.7%	0.7%	0.7%	0.7%
	Estimated Annual Growth 2020 to 2024	2.7%	0.8%	0.6%	0.7%
	Projected Annual Growth 2024 to 2029	1.1%	0.7%	0.4%	0.8%
Households	Current Estimated Households	2,306	14,105	35,245	16,313
	2020 Census Households	2,026	13,409	34,123	15,574
	2010 Census Households	1,804	11,972	30,881	14,013
	Historical Annual Growth 2010 to 2020	1.2%	1.1%	1.0%	1.1%
	Estimated Annual Growth 2020 to 2024	3.1%	1.2%	0.8%	1.1%
	Projected Annual Growth 2024 to 2029	1.4%	0.9%	0.6%	1.0%
Population per Household		2.5	2.5	2.5	2.5
Race	White	78.8%	78.3%	51.6%	70.9%
	Black or African American	9.4%	10.7%	38.4%	18.5%
	American Indian	0.6%	0.4%	0.4%	0.4%
	Asian	2.2%	2.5%	1.9%	2.3%
	Pacific Islander	0.1%	0.1%	0.1%	0.1%
	2 or More Races	7.1%	6.4%	5.7%	6.2%
	Other Races	1.7%	1.6%	1.9%	1.6%
	Hispanic Origin	4.7%	4.2%	4.1%	4.0%