

**Village Shopping Center**  
Richmond, Virginia

**1 Mile Radius**

**3 Mile Radius**

**5 Mile Radius**

**10 Minute Drive**

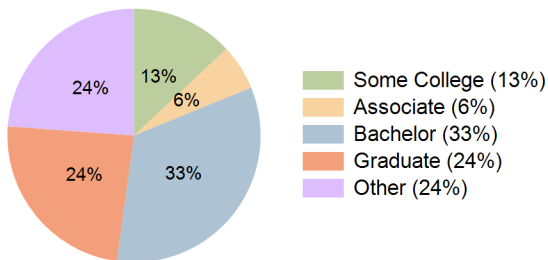
### Current Year Demographics

Current Population	12,260	82,315	231,389	91,802
Total Daytime Pop	12,276	115,728	264,504	116,287
Daytime Workers	7,293	80,123	170,248	76,579
Average Household Income	\$148,647	\$139,034	\$128,501	\$138,329
Median Household Income	\$105,192	\$94,062	\$89,054	\$94,103
Total Households	4,821	33,490	103,489	38,399
Median Home Value	\$515,994	\$479,777	\$440,987	\$490,288
Bachelors Degree	37.5%	32.6%	33.6%	33.3%
Graduate Degree	30.5%	23.3%	23.7%	24.0%
Consumer Spending Index	130	122	113	122

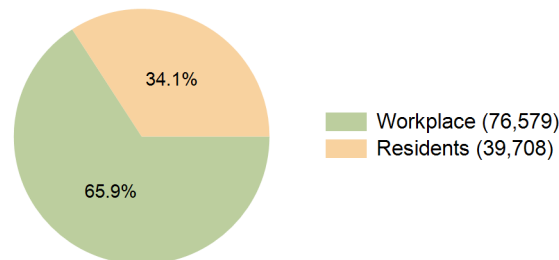
### 2029 Demographic Projections

Projected Population	12,132	82,705	235,944	91,897
Projected 5 Year Annual Growth Rate (Pop)	-0.2%	0.1%	0.4%	0.0%
Projected Households	4,790	33,959	106,980	38,759
Projected 5 Year Annual Growth Rate (HH)	-0.1%	0.3%	0.7%	0.2%

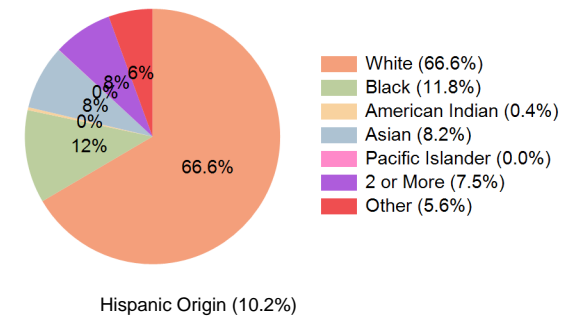
**Education (10 Minute Drive)**



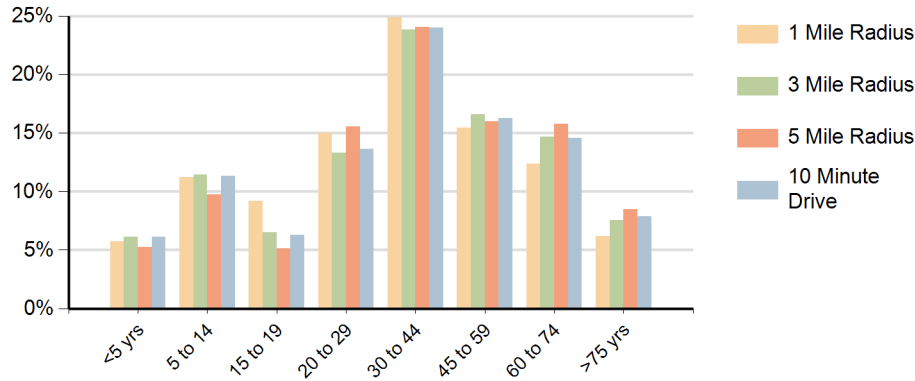
**Daytime Population (10 Minute Drive)**



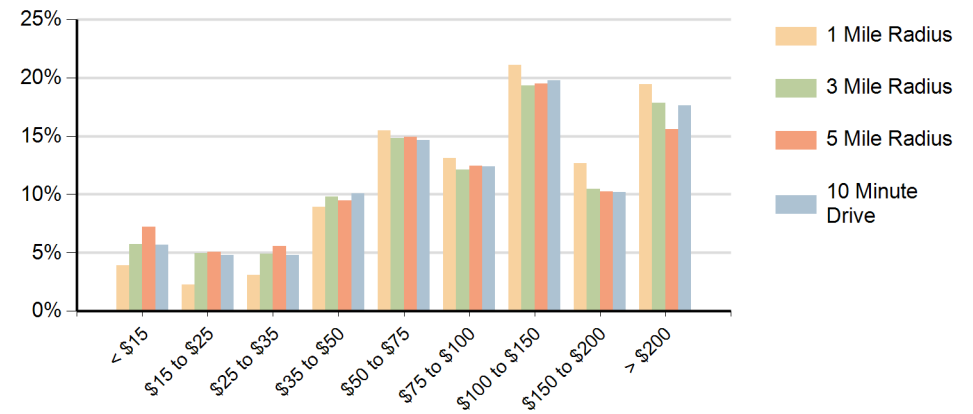
**Race (10 Minute Drive)**



## Population by Age Range



## Households by Income Range (\$000)



Village Shopping Center Richmond, Virginia		1 Mile Radius	3 Mile Radius	5 Mile Radius	10 Minute Drive
Population	Current Estimated Population	12,260	82,315	231,389	91,802
	2020 Census Population	12,234	80,454	226,605	90,267
	2010 Census Population	12,253	75,633	211,637	84,080
	Historical Annual Growth 2010 to 2020	0.0%	0.6%	0.7%	0.7%
	Estimated Annual Growth 2020 to 2024	0.1%	0.5%	0.5%	0.4%
	Projected Annual Growth 2024 to 2029	-0.2%	0.1%	0.4%	0.0%
Households	Current Estimated Households	4,821	33,490	103,489	38,399
	2020 Census Households	4,801	32,348	100,199	37,411
	2010 Census Households	4,756	30,704	94,157	35,263
	Historical Annual Growth 2010 to 2020	0.1%	0.5%	0.6%	0.6%
	Estimated Annual Growth 2020 to 2024	0.1%	0.8%	0.8%	0.6%
	Projected Annual Growth 2024 to 2029	-0.1%	0.3%	0.7%	0.2%
Population per Household		2.3	2.3	2.2	2.3
Race	White	77.5%	66.2%	64.9%	66.6%
	Black or African American	5.5%	12.1%	16.1%	11.8%
	American Indian	0.2%	0.4%	0.4%	0.4%
	Asian	5.8%	7.4%	7.1%	8.2%
	Pacific Islander	0.0%	0.1%	0.0%	0.0%
	2 or More Races	6.7%	7.6%	7.3%	7.5%
	Other Races	4.2%	6.3%	4.2%	5.6%
	Hispanic Origin	7.6%	11.2%	8.3%	10.2%