

Centre Ridge Marketplace
Centreville, Virginia

1 Mile Radius

3 Mile Radius

5 Mile Radius

10 Minute Drive

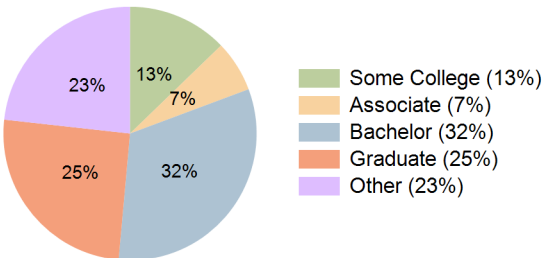
Current Year Demographics

Current Population	22,291	91,749	221,601	99,838
Total Daytime Pop	14,403	61,049	219,634	83,373
Daytime Workers	6,315	23,941	128,538	42,686
Average Household Income	\$158,551	\$193,373	\$178,221	\$186,551
Median Household Income	\$120,014	\$140,604	\$126,959	\$133,565
Total Households	7,979	30,793	74,312	33,175
Median Home Value	\$504,150	\$663,758	\$628,001	\$658,952
Bachelors Degree	37.7%	33.5%	31.0%	32.1%
Graduate Degree	19.0%	25.7%	23.5%	25.3%
Consumer Spending Index	139	168	155	162

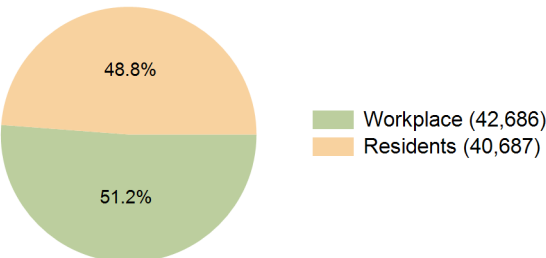
2029 Demographic Projections

Projected Population	22,012	91,383	223,139	100,471
Projected 5 Year Annual Growth Rate (Pop)	-0.3%	-0.1%	0.1%	0.1%
Projected Households	7,849	30,570	74,722	33,273
Projected 5 Year Annual Growth Rate (HH)	-0.3%	-0.2%	0.1%	0.1%

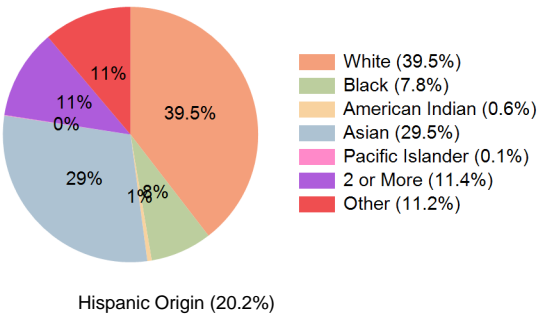
Education (10 Minute Drive)



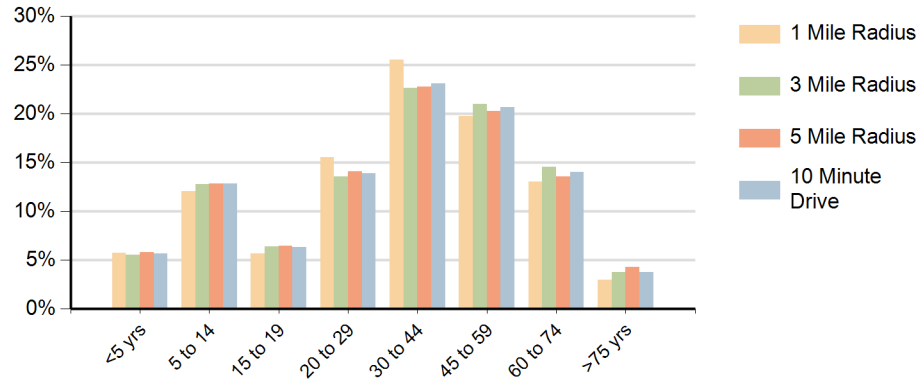
Daytime Population (10 Minute Drive)



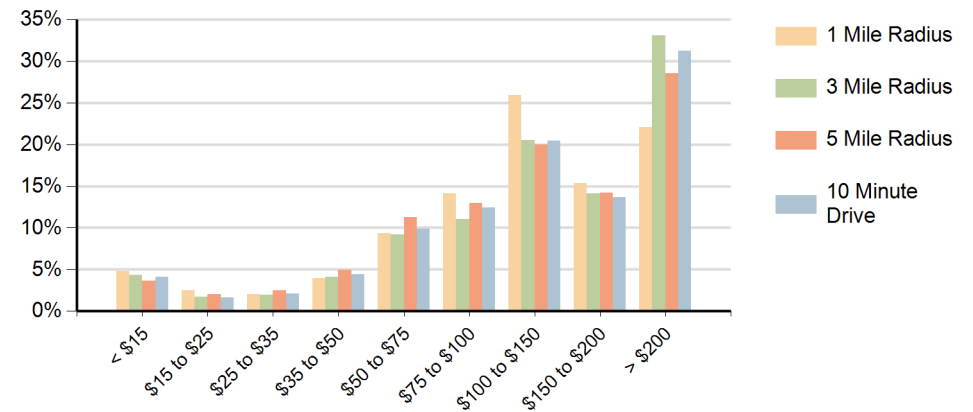
Race (10 Minute Drive)



Population by Age Range



Households by Income Range (\$000)



Centre Ridge Marketplace Centreville, Virginia		1 Mile Radius	3 Mile Radius	5 Mile Radius	10 Minute Drive
Population	Current Estimated Population	22,291	91,749	221,601	99,838
	2020 Census Population	22,802	93,130	219,330	99,036
	2010 Census Population	21,854	88,772	201,577	92,955
	Historical Annual Growth 2010 to 2020	0.4%	0.5%	0.9%	0.6%
	Estimated Annual Growth 2020 to 2024	-0.5%	-0.4%	0.2%	0.2%
	Projected Annual Growth 2024 to 2029	-0.3%	-0.1%	0.1%	0.1%
Households	Current Estimated Households	7,979	30,793	74,312	33,175
	2020 Census Households	8,205	31,334	73,681	33,017
	2010 Census Households	7,921	30,165	69,461	31,389
	Historical Annual Growth 2010 to 2020	0.4%	0.4%	0.6%	0.5%
	Estimated Annual Growth 2020 to 2024	-0.7%	-0.4%	0.2%	0.1%
	Projected Annual Growth 2024 to 2029	-0.3%	-0.2%	0.1%	0.1%
Race	Population per Household	2.8	3.0	3.0	3.0
	White	35.5%	41.4%	39.3%	39.5%
	Black or African American	9.0%	7.4%	8.5%	7.8%
	American Indian	0.8%	0.5%	0.7%	0.6%
	Asian	31.6%	29.5%	24.5%	29.5%
	Pacific Islander	0.1%	0.1%	0.1%	0.1%
	2 or More Races	12.3%	11.2%	11.8%	11.4%
	Other Races	10.8%	9.9%	15.1%	11.2%
Hispanic Origin		20.6%	18.6%	25.5%	20.2%