

Aurora Marketplace
Edmonds, Washington

1 Mile Radius

3 Mile Radius

5 Mile Radius

10 Minute Drive

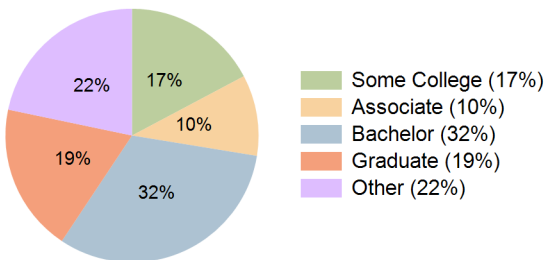
Current Year Demographics

Current Population	19,594	133,273	266,646	129,965
Total Daytime Pop	14,487	117,142	233,652	118,702
Daytime Workers	5,485	55,743	110,814	58,937
Average Household Income	\$135,522	\$151,998	\$152,788	\$148,086
Median Household Income	\$98,895	\$105,401	\$106,446	\$103,159
Total Households	8,360	54,854	109,166	53,846
Median Home Value	\$810,725	\$826,426	\$840,485	\$824,074
Bachelors Degree	30.3%	31.7%	31.3%	31.8%
Graduate Degree	17.6%	19.1%	20.1%	18.9%
Consumer Spending Index	117	132	132	128

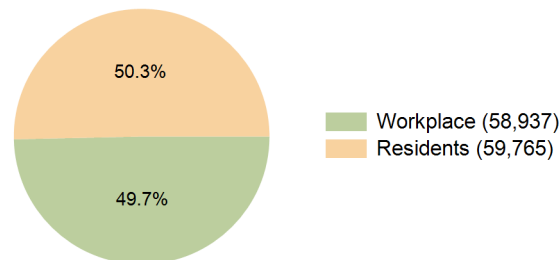
2029 Demographic Projections

Projected Population	20,332	140,567	281,657	138,435
Projected 5 Year Annual Growth Rate (Pop)	0.7%	1.1%	1.1%	1.3%
Projected Households	8,657	57,579	114,946	57,177
Projected 5 Year Annual Growth Rate (HH)	0.7%	1.0%	1.0%	1.2%

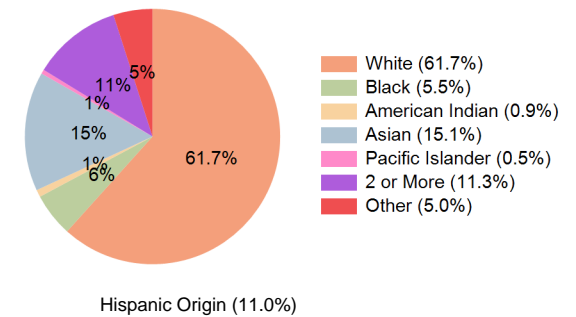
Education (10 Minute Drive)



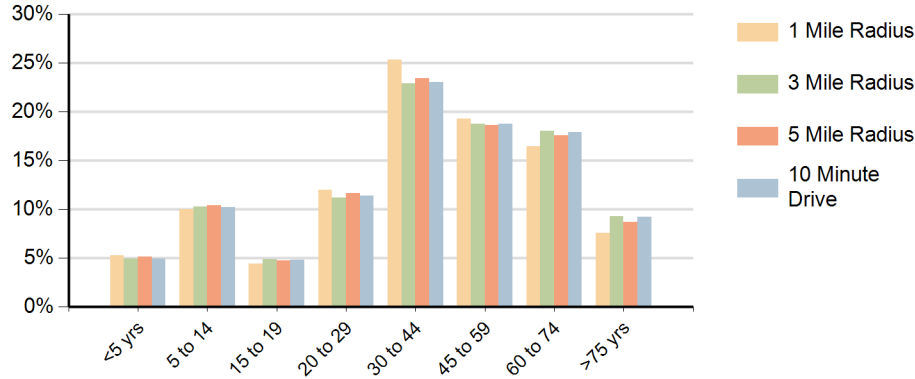
Daytime Population (10 Minute Drive)



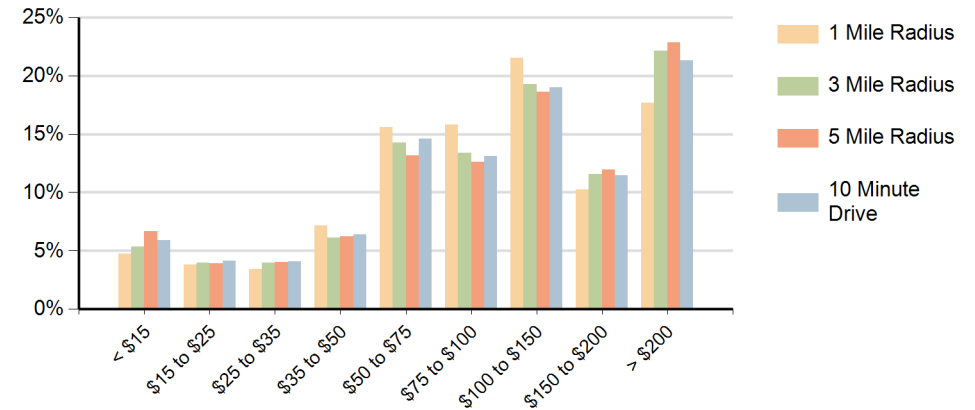
Race (10 Minute Drive)



Population by Age Range



Households by Income Range (\$000)



Aurora Marketplace Edmonds, Washington		1 Mile Radius	3 Mile Radius	5 Mile Radius	10 Minute Drive
Population	Current Estimated Population	19,594	133,273	266,646	129,965
	2020 Census Population	18,994	127,274	256,401	123,983
	2010 Census Population	17,256	116,906	232,518	113,575
	Historical Annual Growth 2010 to 2020	1.0%	0.9%	1.0%	0.9%
	Estimated Annual Growth 2020 to 2024	0.7%	1.1%	0.9%	1.1%
	Projected Annual Growth 2024 to 2029	0.7%	1.1%	1.1%	1.3%
Households	Current Estimated Households	8,360	54,854	109,166	53,846
	2020 Census Households	8,130	52,469	105,217	51,445
	2010 Census Households	7,542	48,866	96,613	47,655
	Historical Annual Growth 2010 to 2020	0.8%	0.7%	0.9%	0.8%
	Estimated Annual Growth 2020 to 2024	0.7%	1.1%	0.9%	1.1%
	Projected Annual Growth 2024 to 2029	0.7%	1.0%	1.0%	1.2%
	Population per Household	2.3	2.4	2.4	2.4
Race	White	59.3%	62.2%	60.2%	61.7%
	Black or African American	6.3%	5.3%	6.1%	5.5%
	American Indian	1.0%	0.9%	0.9%	0.9%
	Asian	16.1%	15.0%	16.1%	15.1%
	Pacific Islander	0.6%	0.5%	0.5%	0.5%
	2 or More Races	11.6%	11.3%	11.4%	11.3%
	Other Races	5.1%	4.8%	4.9%	5.0%
	Hispanic Origin	11.6%	10.8%	10.8%	11.0%