

**Shoppes of Pebblebrooke**  
Naples, Florida

**1 Mile Radius**

**3 Mile Radius**

**5 Mile Radius**

**10 Minute Drive**

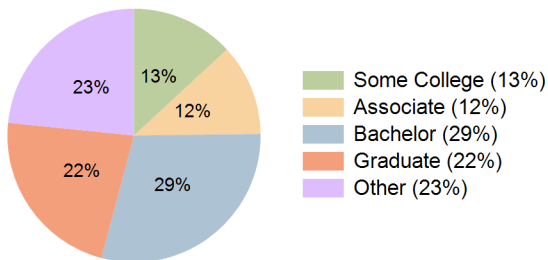
**Current Year Demographics**

Current Population	10,269	39,406	89,950	32,049
Total Daytime Pop	7,454	33,066	75,151	25,645
Daytime Workers	1,924	9,586	22,240	6,567
Average Household Income	\$130,445	\$148,837	\$151,389	\$135,514
Median Household Income	\$90,349	\$100,968	\$103,267	\$91,493
Total Households	3,946	16,538	39,487	13,657
Median Home Value	\$618,526	\$652,940	\$647,994	\$633,651
Bachelors Degree	29.3%	28.5%	30.0%	29.4%
Graduate Degree	19.2%	23.2%	22.8%	22.5%
Consumer Spending Index	114	130	132	119

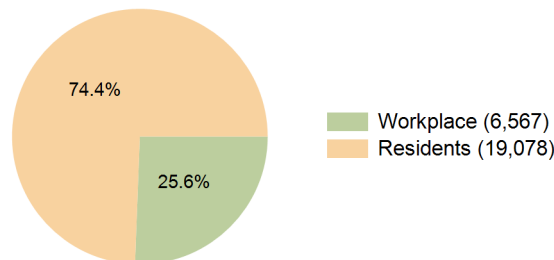
**2029 Demographic Projections**

Projected Population	10,412	40,002	91,595	32,404
Projected 5 Year Annual Growth Rate (Pop)	0.3%	0.3%	0.4%	0.2%
Projected Households	4,133	17,342	41,395	14,263
Projected 5 Year Annual Growth Rate (HH)	0.9%	1.0%	1.0%	0.9%

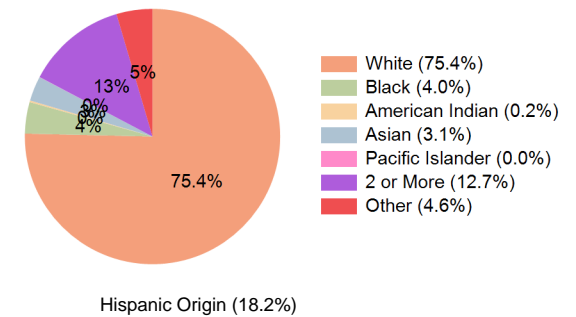
**Education (10 Minute Drive)**



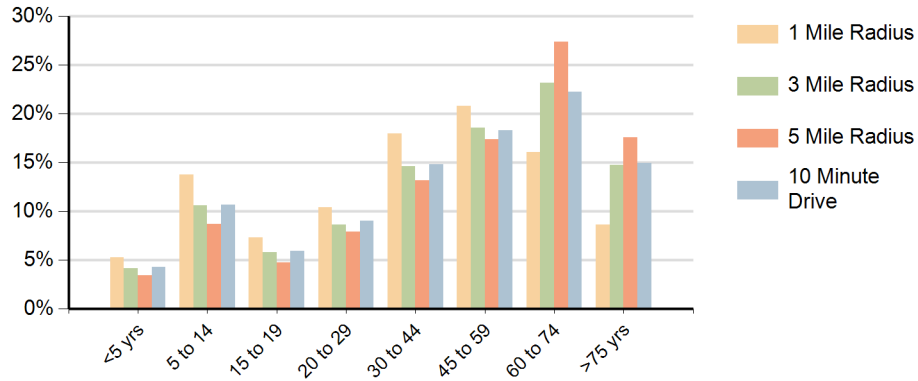
**Daytime Population (10 Minute Drive)**



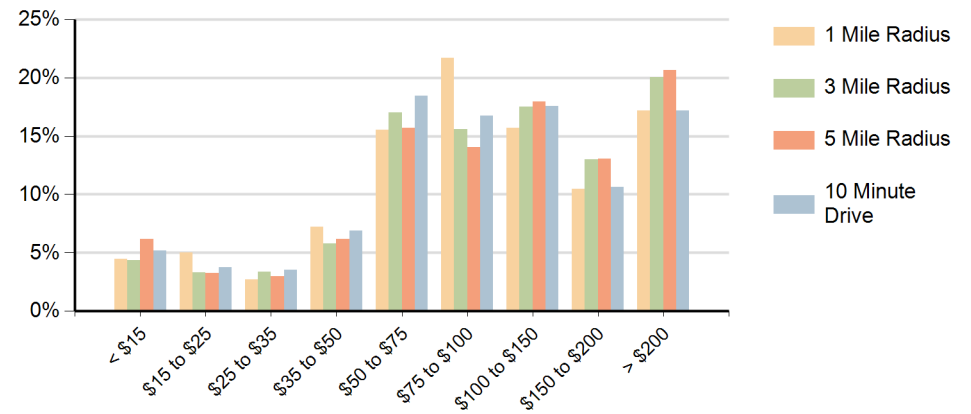
**Race (10 Minute Drive)**



## Population by Age Range



## Households by Income Range (\$000)



Shoppes of Pebblebrooke Naples, Florida		1 Mile Radius	3 Mile Radius	5 Mile Radius	10 Minute Drive
Population	Current Estimated Population	10,269	39,406	89,950	32,049
	2020 Census Population	8,561	33,726	80,768	28,365
	2010 Census Population	5,693	21,445	57,720	18,987
	Historical Annual Growth 2010 to 2020	4.2%	4.6%	3.4%	4.1%
	Estimated Annual Growth 2020 to 2024	4.4%	3.7%	2.6%	2.9%
	Projected Annual Growth 2024 to 2029	0.3%	0.3%	0.4%	0.2%
Households	Current Estimated Households	3,946	16,538	39,487	13,657
	2020 Census Households	3,228	13,993	34,946	11,923
	2010 Census Households	2,082	8,837	24,558	7,856
	Historical Annual Growth 2010 to 2020	4.5%	4.7%	3.6%	4.3%
	Estimated Annual Growth 2020 to 2024	4.8%	4.0%	2.9%	3.3%
	Projected Annual Growth 2024 to 2029	0.9%	1.0%	1.0%	0.9%
	Population per Household	2.6	2.4	2.3	2.3
Race	White	73.8%	76.2%	79.1%	75.4%
	Black or African American	3.7%	3.7%	2.8%	4.0%
	American Indian	0.2%	0.2%	0.2%	0.2%
	Asian	4.1%	3.0%	2.4%	3.1%
	Pacific Islander	0.0%	0.0%	0.0%	0.0%
	2 or More Races	13.4%	12.4%	11.2%	12.7%
	Other Races	4.8%	4.5%	4.2%	4.6%
	Hispanic Origin	19.2%	17.7%	16.2%	18.2%